

## ASB6 RABBIT PAB

**Cat.#:** S219005

**Product Name:** Anti-ASB6 Rabbit Polyclonal Antibody

**Synonyms:**

**UNIPROT ID:** Q9NWX5 (Gene Accession - BC001719 )

**Background:** The protein encoded by this gene belongs to a family of ankyrin repeat proteins that, along with four other protein families, contain a C-terminal SOCS box motif. Growing evidence suggests that the SOCS box similar to the F-box acts as a bridge between specific substrate-binding domains and the more generic proteins that comprise a large family of E3 ubiquitin protein ligases. Alternatively spliced transcript variants have been identified for this gene. [provided by RefSeq, Jan 2011]

**Immunogen:** Fusion protein of human ASB6

**Applications:** ELISA, IHC

**Recommended Dilutions:** IHC: 50-200; ELISA: 5000-10000

**Host Species:** Rabbit

**Clonality:** Rabbit Polyclonal

**Isotype:** Immunogen-specific rabbit IgG

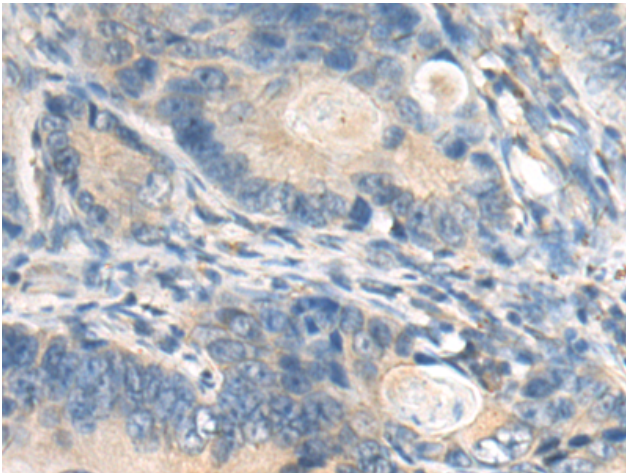
**Purification:** Antigen affinity purification

**Species Reactivity:** Human, Mouse

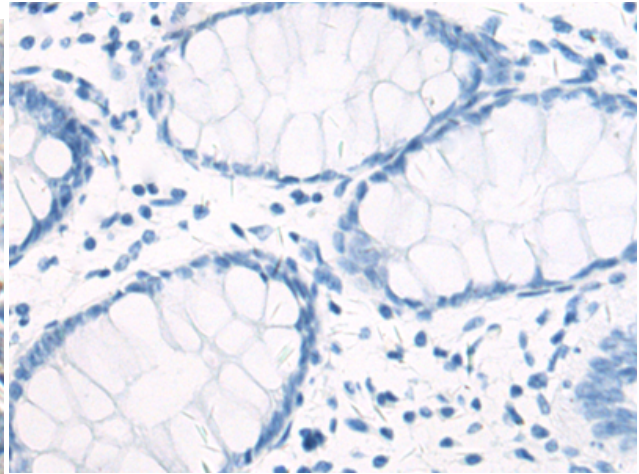
**Constituents:** PBS (without Mg<sup>2+</sup> and Ca<sup>2+</sup>), pH 7.4, 150 mM NaCl, 0.05% Sodium Azide and 40% glycerol

**Research Areas:** Cell Biology

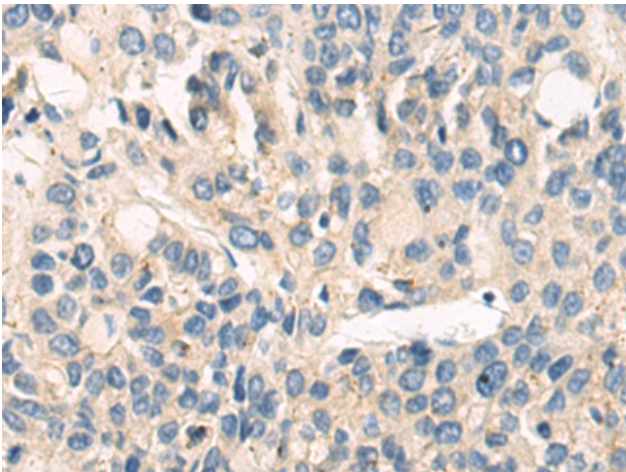
**Storage & Shipping:** Store at -20°C. Avoid repeated freezing and thawing



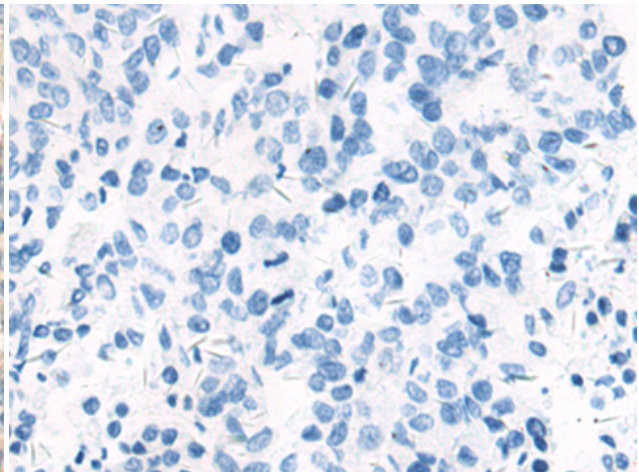
Immunohistochemistry analysis of paraffin embedded Human colorectal cancer tissue using 219005(ASB6 Antibody) at a dilution of 1/80(Cytoplasm).



In comparison with the IHC on the left, the same paraffin-embedded Human colorectal cancer tissue is first treated with the fusion protein and then with 219005(Anti-ASB6 Antibody) at dilution 1/80.



The image on the left is immunohistochemistry of paraffin-embedded Human liver cancer tissue using 219005(Anti-ASB6 Antibody) at a dilution of 1/80.



In comparison with the IHC on the left, the same paraffin-embedded Human liver cancer tissue is first treated with fusion protein and then with D225636(Anti-ASB6 Antibody) at dilution 1/80.