

## ASGR1 RABBIT PAB

**Cat.#:** S210936

**Product Name:** Anti-ASGR1 Rabbit Polyclonal Antibody

**Synonyms:** HL-1; ASGPR; ASGPR1; CLEC4H1

**UNIPROT ID:** P07306 (Gene Accession - BC032130 )

**Background:** This gene encodes a subunit of the asialoglycoprotein receptor. This receptor is a transmembrane protein that plays a critical role in serum glycoprotein homeostasis by mediating the endocytosis and lysosomal degradation of glycoproteins with exposed terminal galactose or N-acetylgalactosamine residues. The asialoglycoprotein receptor may facilitate hepatic infection by multiple viruses including hepatitis B, and is also a target for liver-specific drug delivery. The asialoglycoprotein receptor is a hetero-oligomeric protein composed of major and minor subunits, which are encoded by different genes. The protein encoded by this gene is the more abundant major subunit. Alternatively spliced transcript variants encoding multiple isoforms have been observed for this gene.

**Immunogen:** Fusion protein of human ASGR1

**Applications:** ELISA, WB, IHC

**Recommended Dilutions:** IHC: 50-200;WB: 200-1000;ELISA: 1000-5000

**Host Species:** Rabbit

**Clonality:** Rabbit Polyclonal

**Isotype:** Immunogen-specific rabbit IgG

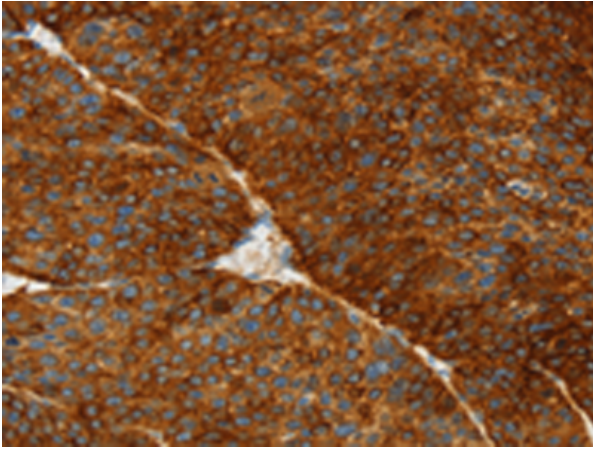
**Purification:** Antigen affinity purification

**Species Reactivity:** Human

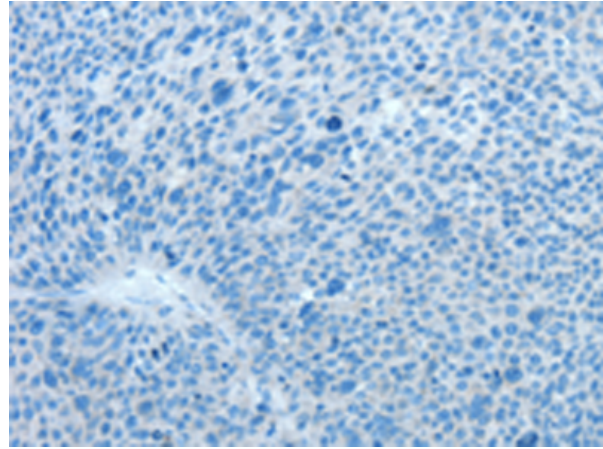
**Constituents:** PBS (without Mg<sup>2+</sup> and Ca<sup>2+</sup>), pH 7.4, 150 mM NaCl, 0.05% Sodium Azide and 40% glycerol

**Research Areas:** Signal Transduction

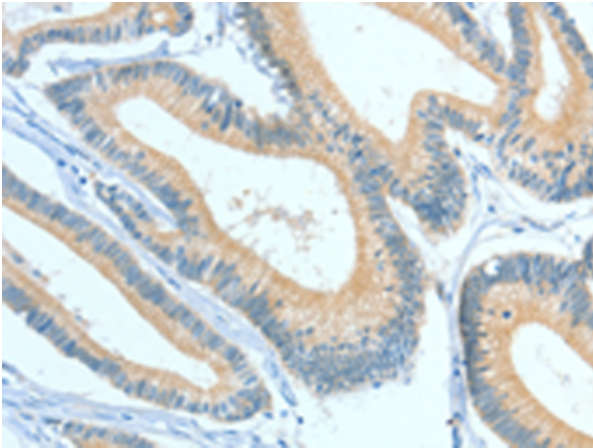
**Storage & Shipping:** Store at -20°C. Avoid repeated freezing and thawing



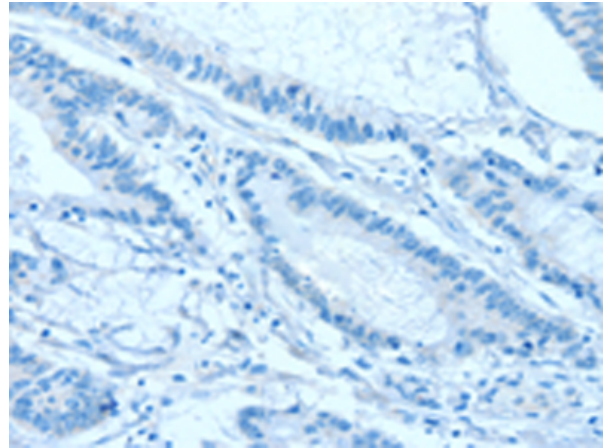
Immunohistochemistry analysis of paraffin embedded Human liver cancer tissue using 210936(ASGR1 Antibody) at a dilution of 1/50(Cytoplasm).



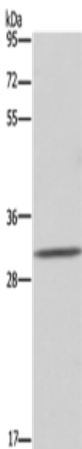
In comparison with the IHC on the left, the same paraffin-embedded Human liver cancer tissue is first treated with the fusion protein and then with 210936(Anti-ASGR1 Antibody) at dilution 1/50.



The image on the left is immunohistochemistry of paraffin-embedded Human colon cancer tissue using 210936(Anti-ASGR1 Antibody) at a dilution of 1/50.



In comparison with the IHC on the left, the same paraffin-embedded Human colon cancer tissue is first treated with fusion protein and then with D121918(Anti-ASGR1 Antibody) at dilution 1/50.



Gel: 8%SDS-PAGE, Lysate: 50 µg;  
Lane: 231 cells;  
Primary antibody: 210936(ASGR1 Antibody) at dilution 1/300;  
Secondary antibody: Goat anti rabbit IgG at 1/8000 dilution;  
Exposure time: 1 minute



# Product Description

Pioneering GTPase and Oncogene Product Development since 2010

---