

ASH2L RABBIT MAB

Cat.#: N261618

Product Name: Anti-ASH2L Rabbit Monoclonal Antibody

Synonyms: ASH2; Bre2; ASH2L1; ASH2L2

UNIPROT ID: Q9UBL3

Background: Component of the Set1/Ash2 histone methyltransferase (HMT) complex, a complex that specifically methylates 'Lys-4' of histone H3, but not if the neighboring 'Lys-9' residue is already methylated. As part of the MLL1/MLL complex it is involved in methylation and dimethylation at 'Lys-4' of histone H3. May function as a transcriptional regulator. May play a role in hematopoiesis.

Immunogen: A synthetic peptide of human ASH2L

Applications: WB, ICC/IF, IP

Recommended Dilutions: WB: 1/500-1/1000 IF: 1/50-1/200 IP: 1/20

Host Species: Rabbit

Clonality: Rabbit Monoclonal

Clone ID: R09-1F6

MW: Calculated MW: 69 kDa; Observed MW: 80 kDa

Isotype: IgG

Purification: Affinity Purified

Species Reactivity: Human, Rat

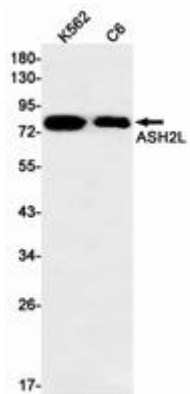
Conjugation: Unconjugated

Modification: Unmodified

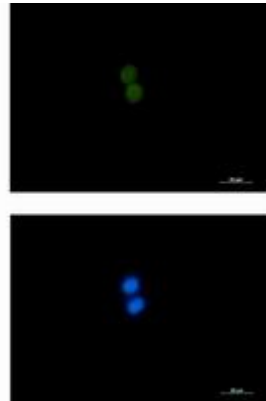
Constituents: PBS (without Mg²⁺ and Ca²⁺), pH 7.3 containing 50% glycerol, 0.5% BSA and 0.02% sodium azide

Research Areas: Epigenetics and Nuclear Signaling

Storage & Shipping: Store at -20°C. Avoid repeated freezing and thawing



Western blot analysis of ASH2L in K562, C6 lysates using ASH2L antibody.



Immunocytochemistry analysis of ASH2L (green) in K562 using ASH2L antibody, and DAPI (blue).