

ASH2L RABBIT PAB

Cat.#: N225644

Product Name: Anti-ASH2L Rabbit pAb

Synonyms: ASH2; Bre2; ASH2L1; ASH2L2

UNIPROT ID: Q9UBL3

Background: Component of the Set1/Ash2 histone methyltransferase (HMT) complex, a complex that specifically methylates 'Lys-4' of histone H3, but not if the neighboring 'Lys-9' residue is already methylated. As part of the MLL1/MLL complex it is involved in methylation and dimethylation at 'Lys-4' of histone H3. May function as a transcriptional regulator. May play a role in hematopoiesis.

Immunogen: A synthesized peptide derived from human ASH2L

Applications: WB,IHC-P,ICC/IF

Recommended Dilutions: WB: 1/500-1/1000 IHC: 1/50-1/100 IF: 1/50-1/200

Host Species: Rabbit

Clonality: Rabbit Polyclonal

Clone ID: -

MW: Calculated MW: 69 kDa; Observed MW: 69 kDa

Isotype: IgG

Purification: Affinity Chromatography

Species Reactivity: Human,Mouse,Rat

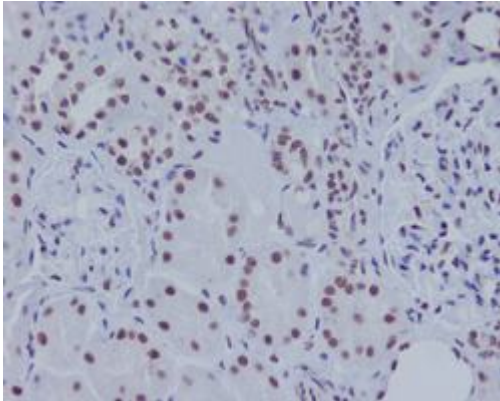
Conjugation: Unconjugated

Modification: Unmodified

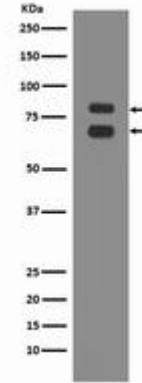
Constituents: PBS (without Mg²⁺ and Ca²⁺), pH 7.3 containing 50% glycerol, 0.5% BSA and 0.02% sodium azide

Research Areas: Epigenetics and Nuclear Signaling

Storage & Shipping: Store at -20°C. Avoid repeated freezing and thawing



Immunohistochemistry analysis of paraffin-embedded Human kidney using ASH2L antibody. High- pressure and temperature Sodium Citrate pH 6.0 was used for antigen retrieval.



Western blot analysis of ASH2L in Sodium K562 lysates using ASH2L antibody.