

## ASPARTATE AMINOTRANSFERASE RABBIT MAB

**Cat.#:** N261879

**Product Name:** Anti-Aspartate Aminotransferase Rabbit Monoclonal Antibody

**Synonyms:** Aspartate aminotransferase; cytoplasmic; Glutamate oxaloacetate transaminase 1; Transaminase A

**UNIPROT ID:** P17174

**Background:** Plays a key role in amino acid metabolism.

**Immunogen:** A synthetic peptide of human Aspartate Aminotransferase

**Applications:** WB,IHC-F,IHC-P,ICC/IF

**Recommended Dilutions:** WB: 1/500-1/1000 IHC: 1/50-1/100 IF: 1/50-1/200

**Host Species:** Rabbit

**Clonality:** Rabbit Monoclonal

**Clone ID:** R05-6C1

**MW:** Calculated MW: 46 kDa; Observed MW: 46 kDa

**Isotype:** IgG

**Purification:** Affinity Purified

**Species Reactivity:** Human,Mouse,Rat

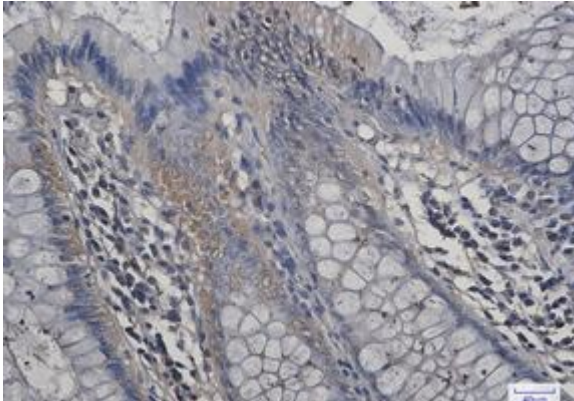
**Conjugation:** Unconjugated

**Modification:** Unmodified

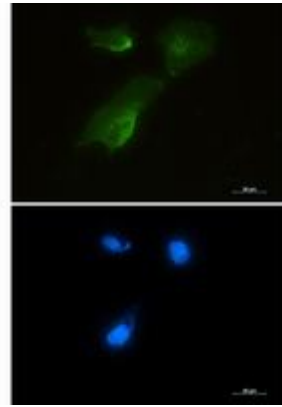
**Constituents:** PBS (without Mg<sup>2+</sup> and Ca<sup>2+</sup>), pH 7.3 containing 50% glycerol, 0.5% BSA and 0.02% sodium azide

**Research Areas:** Signal Transduction

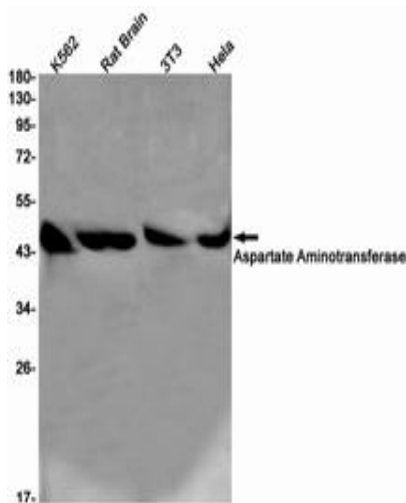
**Storage & Shipping:** Store at -20°C. Avoid repeated freezing and thawing



Immunohistochemistry analysis of paraffin-embedded Human colon cancer tissue using Aspartate Aminotransferase antibody. High-pressure and temperature Sodium Citrate pH 6.0 was used for antigen retrieval.



Immunocytochemistry analysis of Aspartate Aminotransferase (green) in U87-MG using Aspartate Aminotransferase antibody, and DAPI (blue).



Western blot analysis of Aspartate Aminotransferase in K562, rat Brain, 3T3, HeLa lysates using Aspartate Aminotransferase antibody.