

## ASTE1 RABBIT PAB

**Cat.#:** S219056

**Product Name:** Anti-ASTE1 Rabbit Polyclonal Antibody

**Synonyms:** HT001

**UNIPROT ID:** Q2TB18 (Gene Accession - BC030274 )

**Background:** Possible role in EGF receptor signaling.

**Immunogen:** Fusion protein of human ASTE1

**Applications:** ELISA, WB, IHC

**Recommended Dilutions:** IHC: 50-300;WB: 500-2000;ELISA: 5000-10000

**Host Species:** Rabbit

**Clonality:** Rabbit Polyclonal

**Isotype:** Immunogen-specific rabbit IgG

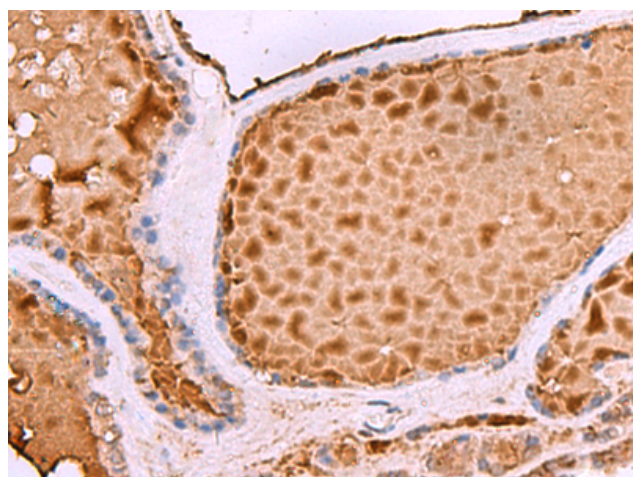
**Purification:** Antigen affinity purification

**Species Reactivity:** Human, Mouse

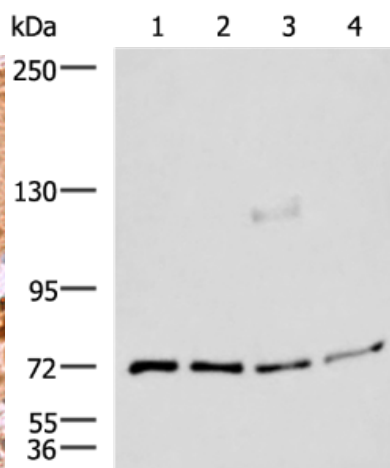
**Constituents:** PBS (without Mg<sup>2+</sup> and Ca<sup>2+</sup>), pH 7.4, 150 mM NaCl, 0.05% Sodium Azide and 40% glycerol

**Research Areas:** Cell Biology

**Storage & Shipping:** Store at -20°C. Avoid repeated freezing and thawing



Immunohistochemistry analysis of paraffin-embedded Human thyroid cancer tissue using 219056(ASTE1 Antibody) at a dilution of 1/50(Cytoplasm).



Gel: 6%SDS-PAGE, Lysate: 40 µg;  
Lane 1-4: A549, A172, TM4 and PC3 cell lysates;  
Primary antibody: 219056(ASTE1 Antibody) at dilution 1/600;  
Secondary antibody: HRP-conjugated Goat anti rabbit IgG at 1/5000 dilution;  
Exposure time: 2 minutes