

## ASTN2 RABBIT PAB

**Cat.#:** S219123

**Product Name:** Anti-ASTN2 Rabbit Polyclonal Antibody

**Synonyms:** bA67K19.1

**UNIPROT ID:** O75129 (Gene Accession - BC029272 )

**Background:** This gene encodes a protein that is expressed in the brain and may function in neuronal migration, based on functional studies of the related astrotactin 1 gene in human and mouse. A deletion at this locus has been associated with schizophrenia. Multiple transcript variants encoding different proteins have been found for this locus.

**Immunogen:** Fusion protein of human ASTN2

**Applications:** ELISA, IHC

**Recommended Dilutions:** IHC: 50–300; ELISA: 5000–10000

**Host Species:** Rabbit

**Clonality:** Rabbit Polyclonal

**Isotype:** Immunogen-specific rabbit IgG

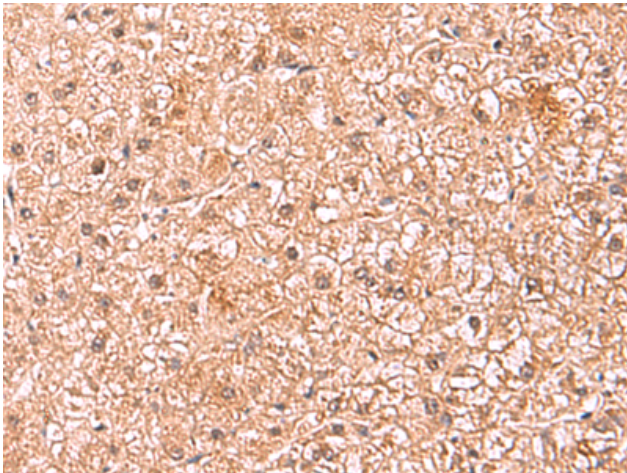
**Purification:** Antigen affinity purification

**Species Reactivity:** Human, Mouse

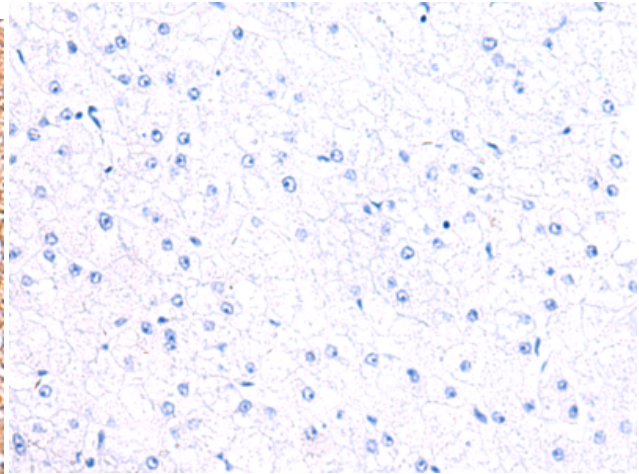
**Constituents:** PBS (without Mg<sup>2+</sup> and Ca<sup>2+</sup>), pH 7.4, 150 mM NaCl, 0.05% Sodium Azide and 40% glycerol

**Research Areas:** Neuroscience

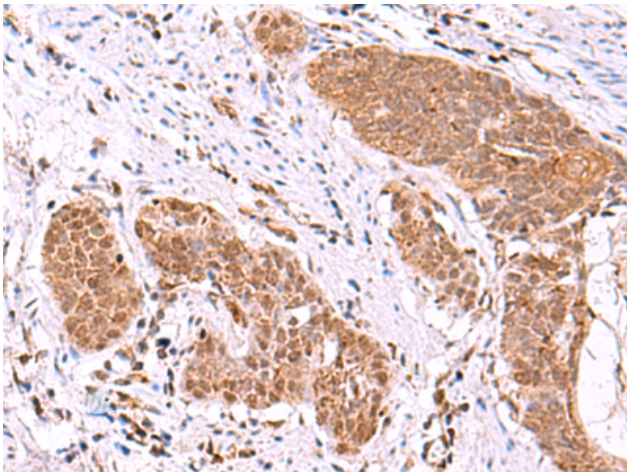
**Storage & Shipping:** Store at -20°C. Avoid repeated freezing and thawing



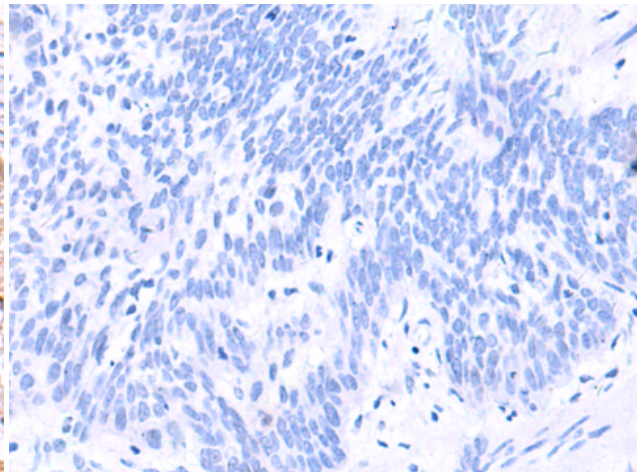
Immunohistochemistry analysis of paraffin embedded Human liver cancer tissue using 219123(ASTN2 Antibody) at a dilution of 1/80(Cytoplasm and Nucleus).



In comparison with the IHC on the left, the same paraffin-embedded Human liver cancer tissue is first treated with the fusion protein and then with 219123(Anti-ASTN2 Antibody) at dilution 1/80.



The image on the left is immunohistochemistry of paraffin-embedded Human esophagus cancer tissue using 219123(Anti-ASTN2 Antibody) at a dilution of 1/80.



In comparison with the IHC on the left, the same paraffin-embedded Human esophagus cancer tissue is first treated with fusion protein and then with D225881(Anti-ASTN2 Antibody) at dilution 1/80.