

ATAT1 RABBIT PAB

Cat.#: S219548

Product Name: Anti-ATAT1 Rabbit Polyclonal Antibody

Synonyms: TAT; MEC17; C6orf134; Nbla00487; alpha-TAT; alpha-TAT1

UNIPROT ID: Q5SQI0 (Gene Accession - BC025755)

Background: This gene encodes a protein that localizes to clathrin-coated pits, where it acetylates alpha tubulin on lysine 40. This process may be important in microtubule growth, for instance during chemotaxis and the formation of cilium. Alternative splicing results in multiple transcript variants.

Immunogen: Fusion protein of human ATAT1

Applications: ELISA, WB, IHC

Recommended Dilutions: IHC: 50-200;WB: 1000-5000;ELISA: 5000-10000

Host Species: Rabbit

Clonality: Rabbit Polyclonal

Isotype: Immunogen-specific rabbit IgG

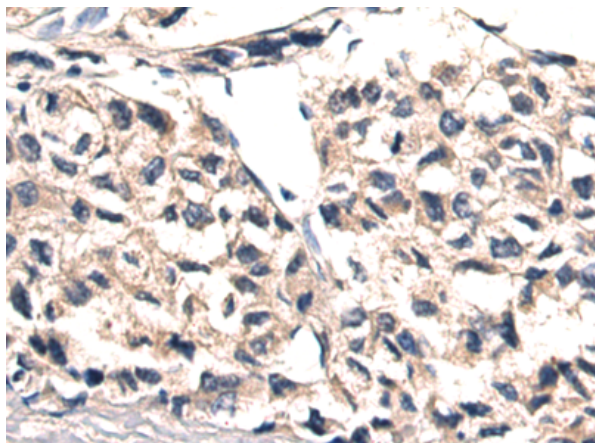
Purification: Antigen affinity purification

Species Reactivity: Human, Mouse, Rat

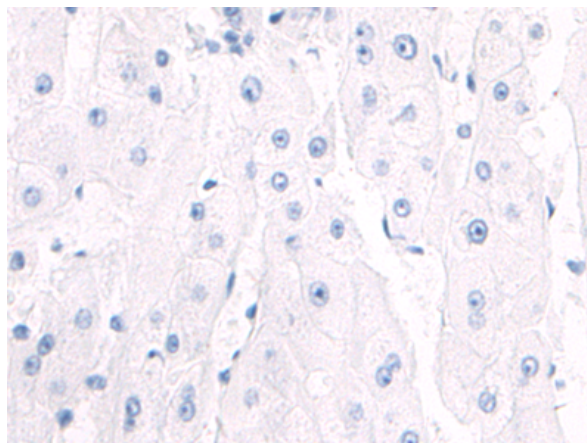
Constituents: PBS (without Mg²⁺ and Ca²⁺), pH 7.4, 150 mM NaCl, 0.05% Sodium Azide and 40% glycerol

Research Areas: Cell Biology

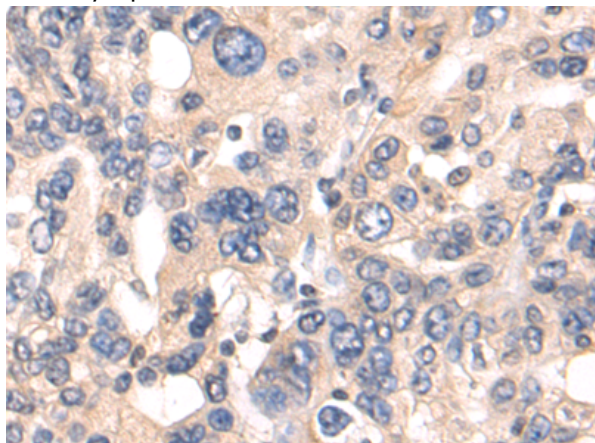
Storage & Shipping: Store at -20°C. Avoid repeated freezing and thawing



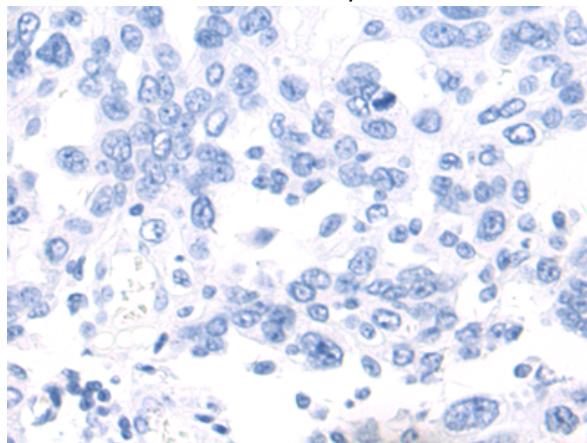
Immunohistochemistry analysis of paraffin embedded Human liver cancer tissue using 219548(ATAT1 Antibody) at a dilution of 1/55(Cytoplasm).



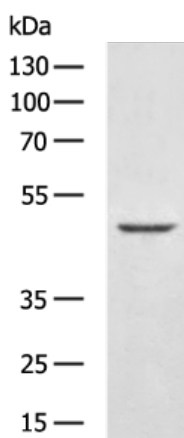
In comparison with the IHC on the left, the same paraffin-embedded Human liver cancer tissue is first treated with the fusion protein and then with 219548(Anti-ATAT1 Antibody) at dilution 1/55.



The image on the left is immunohistochemistry of paraffin-embedded Human breast cancer tissue using 219548(Anti-ATAT1 Antibody) at a dilution of 1/55.



In comparison with the IHC on the left, the same paraffin-embedded Human breast cancer tissue is first treated with fusion protein and then with D227662(Anti-ATAT1 Antibody) at dilution 1/55.



Gel: 8%SDS-PAGE, Lysate: 40 µg;
 Lane: Mouse liver tissue lysate;
 Primary antibody: 219548(ATAT1 Antibody) at dilution 1/800;
 Secondary antibody: HRP-conjugated Goat anti rabbit IgG at 1/5000 dilution;
 Exposure time: 40 seconds



Product Description

Pioneering GTPase and Oncogene Product Development since 2010
