

## ATF2 RABBIT PAB

**Cat.#:** S216365

**Product Name:** Anti-ATF2 Rabbit Polyclonal Antibody

**Synonyms:** HB16; CREB2; TREB7; CRE-BP1

**UNIPROT ID:** P15336 (Gene Accession - BC130335 )

**Background:** This gene encodes a transcription factor that is a member of the leucine zipper family of DNA binding proteins. This protein binds to the cAMP-responsive element (CRE), an octameric palindrome. It forms a homodimer or a heterodimer with c-Jun and stimulates CRE-dependent transcription. This protein is also a histone acetyltransferase (HAT) that specifically acetylates histones H2B and H4 in vitro; thus it may represent a class of sequence-specific factors that activate transcription by direct effects on chromatin components. Several alternatively spliced transcript variants have been found for this gene.

**Immunogen:** Fusion protein of human ATF2

**Applications:** ELISA, IHC

**Recommended Dilutions:** IHC: 15-50; ELISA: 1000-2000

**Host Species:** Rabbit

**Clonality:** Rabbit Polyclonal

**Isotype:** Immunogen-specific rabbit IgG

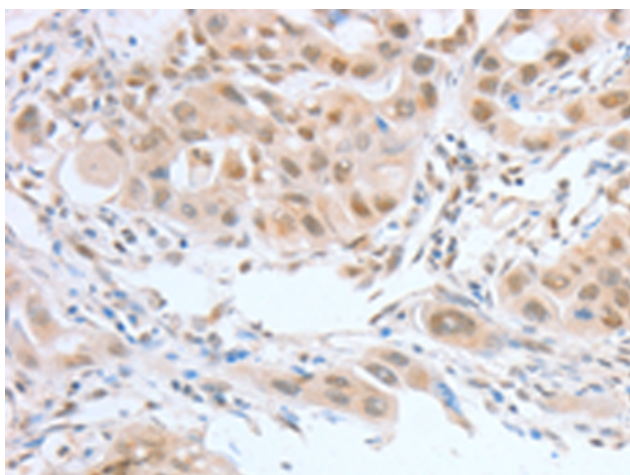
**Purification:** Antigen affinity purification

**Species Reactivity:** Human, Mouse, Rat

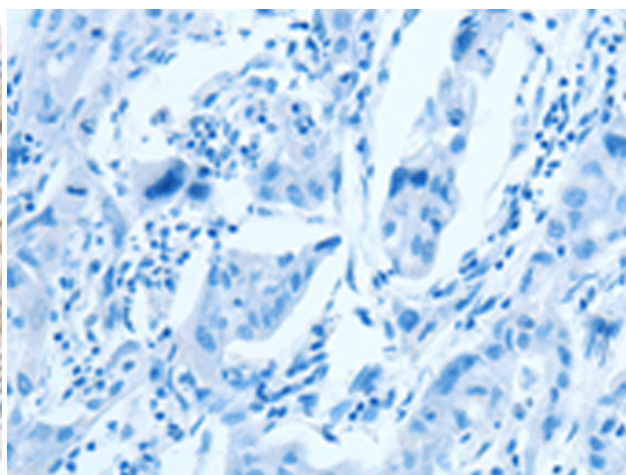
**Constituents:** PBS (without Mg<sup>2+</sup> and Ca<sup>2+</sup>), pH 7.4, 150 mM NaCl, 0.05% Sodium Azide and 40% glycerol

**Research Areas:** Epigenetics and Nuclear Signaling, Immunology

**Storage & Shipping:** Store at -20°C. Avoid repeated freezing and thawing



Immunohistochemistry analysis of paraffin embedded Human lung cancer tissue using 216365(ATF2 Antibody) at a dilution of 1/15(Nucleus).



In comparison with the IHC on the left, the same paraffin-embedded Human lung cancer tissue is first treated with the fusion protein and then with 216365(Anti-ATF2 Antibody) at dilution 1/15.