

ATG10 RABBIT MAB

Cat.#: N263228

Product Name: Anti-ATG10 Rabbit Monoclonal Antibody

Synonyms: autophagy related 10; APG10; APG10L; pp12616

UNIPROT ID: Q9H0Y0

Background: E2-like enzyme involved in autophagy. Acts as an E2-like enzyme that catalyzes the conjugation of ATG12 to ATG5. ATG12 conjugation to ATG5 is required for autophagy. Likely serves as an ATG5-recognition molecule. Not involved in ATG12 conjugation to ATG3 (By similarity). Plays a role in adenovirus-mediated cell lysis.

Immunogen: A synthetic peptide of human ATG10

Applications: WB,IP

Recommended Dilutions: WB: 1/500-1/1000 IP: 1/20

Host Species: Rabbit

Clonality: Rabbit Monoclonal

Clone ID: R02-0B2

MW: Calculated MW: 25 kDa; Observed MW: 25 kDa

Isotype: IgG

Purification: Affinity Purified

Species Reactivity: Human

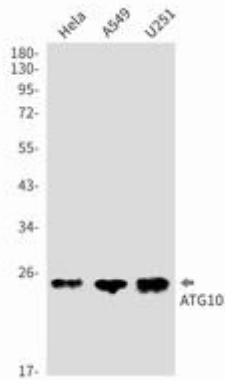
Conjugation: Unconjugated

Modification: Unmodified

Constituents: PBS (without Mg²⁺ and Ca²⁺), pH 7.3 containing 50% glycerol, 0.5% BSA and 0.02% sodium azide

Research Areas: Cell Biology

Storage & Shipping: Store at -20°C. Avoid repeated freezing and thawing



Western blot analysis of ATG10 in HeLa, A549, U251 lysates using ATG10 antibody.