

ATG13 RABBIT MAB

Cat.#: N261586

Product Name: Anti-ATG13 Rabbit Monoclonal Antibody

Synonyms: Autophagy-related protein 13

UNIPROT ID: O75143

Background: Autophagy factor required for autophagosome formation and mitophagy.

Immunogen: Recombinant protein of human KIAA0652

Applications: WB,IP

Recommended Dilutions: WB: 1/500-1/1000 IP: 1/20

Host Species: Rabbit

Clonality: Rabbit Monoclonal

Clone ID: R08-8E8

MW: Calculated MW: 57 kDa; Observed MW: 72 kDa

Isotype: IgG

Purification: Affinity Purified

Species Reactivity: Human,Mouse,Rat

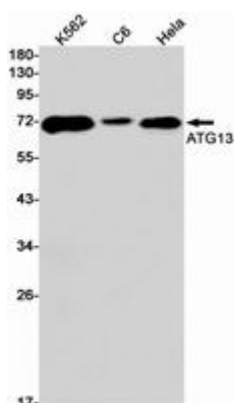
Conjugation: Unconjugated

Modification: Unmodified

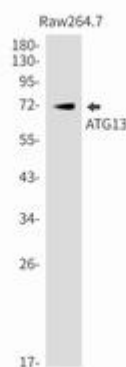
Constituents: PBS (without Mg²⁺ and Ca²⁺), pH 7.3 containing 50% glycerol, 0.5% BSA and 0.02% sodium azide

Research Areas: Cell Biology

Storage & Shipping: Store at -20°C. Avoid repeated freezing and thawing



Western blot analysis of ATG13 in K562, C6, HeLa lysates using ATG13 antibody.



Western blot analysis of ATG13 in Raw264.7 lysates using ATG13 antibody.



Product Description

Pioneering GTPase and Oncogene Product Development since 2010
