

ATG2A RABBIT PAB

Cat.#: S221815

Product Name: Anti-ATG2A Rabbit Polyclonal Antibody

Synonyms:

UNIPROT ID: Q2TAZ0 (Gene Accession - NP_055919)

Background: Atg2A (TG2 autophagy related 2 homolog A) is a 1,938 amino acid protein that belongs to the ATG2 family and may play a role in vesicle assembly. Encoded by a gene that maps to human chromosome 11q13.1, Atg2A is conserved in chimpanzee, dog, cow, mouse and rat, and exists as four alternatively spliced isoforms. Undetected in adult tissues, including heart, brain, placenta, lung, liver and skeletal muscle, Atg2A regulation may act as a distinct indicator of autophagic programmed cell death. Atg2A is upregulated in both etoposide- and doxorubicin-induced apoptosis of HeLa cells, suggesting that Atg2A functions as a novel biomarker of topoisomerase II inhibitor-mediated apoptosis. Atg2A associates with Atg2B, indicating that these two related proteins also functionally interact. Atg2A frameshift mutations are linked to gastric and colorectal carcinomas with high microsatellite instability and may contribute to cancer development by deregulating the autophagy process. Required for both autophagosome formation and regulation of lipid droplet morphology and dispersion.

Immunogen: Synthetic peptide of human ATG2A

Applications: ELISA, IHC

Recommended Dilutions: IHC: 20-100; ELISA: 500-1000

Host Species: Rabbit

Clonality: Rabbit Polyclonal

Isotype: Immunogen-specific rabbit IgG

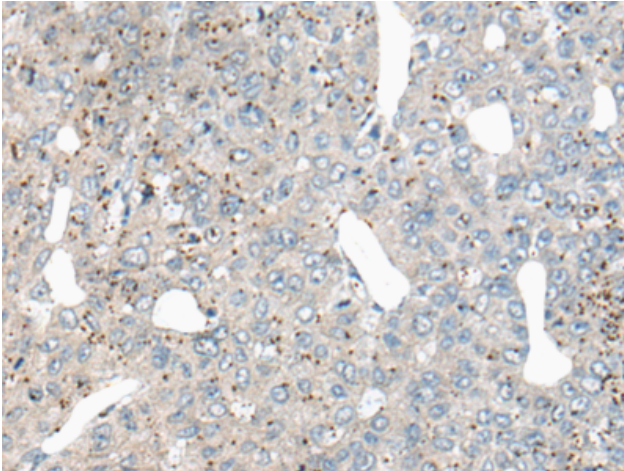
Purification: Antigen affinity purification

Species Reactivity: Human, Mouse

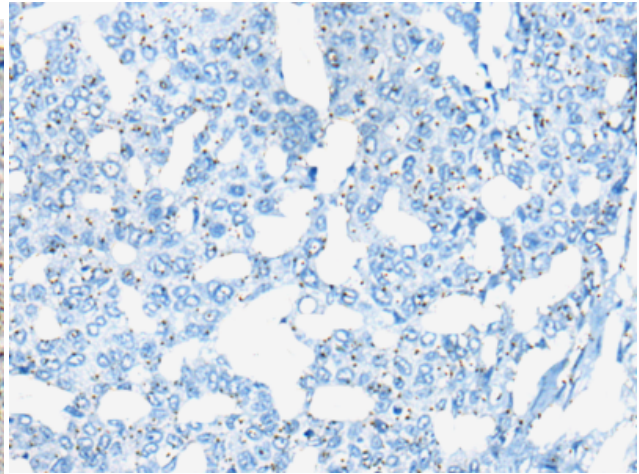
Constituents: PBS (without Mg²⁺ and Ca²⁺), pH 7.4, 150 mM NaCl, 0.05% Sodium Azide and 40% glycerol

Research Areas: Cancer

Storage & Shipping: Store at -20°C. Avoid repeated freezing and thawing



Immunohistochemistry analysis of paraffin embedded Human liver cancer tissue using 221815(ATG2A Antibody) at a dilution of 1/20(Cytoplasm).



In comparison with the IHC on the left, the same paraffin-embedded Human liver cancer tissue is first treated with the synthetic peptide and then with 221815(Anti-ATG2A Antibody) at dilution 1/20.