

ATG3 RABBIT MAB

Cat.#: N261886

Product Name: Anti-ATG3 Rabbit Monoclonal Antibody

Synonyms: APG3; APG3L; PC3-96; APG3-LIKE

UNIPROT ID: Q9NT62

Background: E2-like enzyme involved in autophagy and mitochondrial homeostasis. Catalyzes the conjugation of ATG8-like proteins (GABARAP, GABARAPL1, GABARAPL2 or MAP1LC3A) to phosphatidylethanolamine (PE). Catalyzing the conjugation of ATG12 to itself, ATG12 conjugation to ATG3 playing a role in mitochondrial homeostasis but not in autophagy. ATG7 (E1-like enzyme) facilitates this reaction by forming an E1-E2 complex with ATG3.

Immunogen: A synthetic peptide of human ATG3

Applications: WB,IHC-F,IHC-P,ICC/IF

Recommended Dilutions: WB: 1/500-1/1000 IHC: 1/50-1/100 IF: 1/50-1/200

Host Species: Rabbit

Clonality: Rabbit Monoclonal

Clone ID: R06-9E7

MW: Calculated MW: 36 kDa; Observed MW: 40 kDa

Isotype: IgG

Purification: Affinity Purified

Species Reactivity: Human,Mouse,Rat

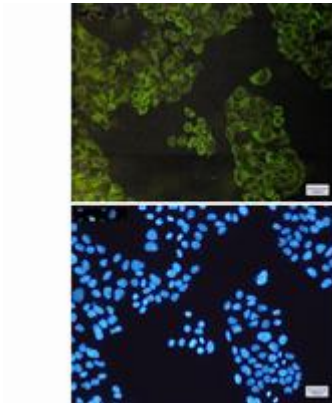
Conjugation: Unconjugated

Modification: Unmodified

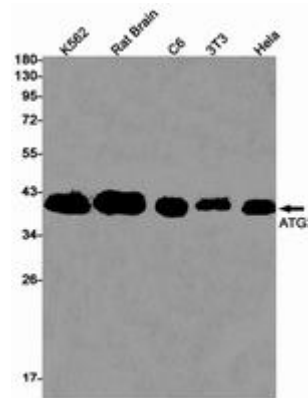
Constituents: PBS (without Mg²⁺ and Ca²⁺), pH 7.3 containing 50% glycerol, 0.5% BSA and 0.02% sodium azide

Research Areas: Autophagy, Autophagosome

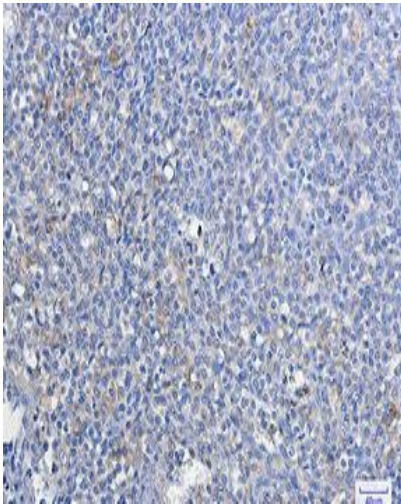
Storage & Shipping: Store at -20°C. Avoid repeated freezing and thawing



Immunocytochemistry analysis of ATG3 (green) in HeLa using ATG3 antibody, and DAPI (blue)



Western blot analysis of ATG3 in K562, rat Brain, C6, 3T3, HeLa lysates using ATG3 antibody.



Immunohistochemistry analysis of paraffin-embedded Human tonsil using ATG3 antibody. High-pressure and temperature Sodium Citrate pH 6.0 was used for antigen retrieval.