

ATG7 (1F8) MOUSE MAB

Cat.#: N261360

Product Name: Anti-ATG7 (1F8) Mouse Monoclonal Antibody

Synonyms: hAGP7; Ubiquitin-activating enzyme E1-like protein; APG7L

UNIPROT ID: O95352

Background: The molecular machinery of autophagy was largely discovered in yeast and referred to as autophagy-related (Atg) genes. Formation of the autophagosome involves a ubiquitin-like conjugation system in which Atg12 is covalently bound to Atg5 and targeted to autophagosome vesicles. This conjugation reaction is mediated by the ubiquitin E1-like enzyme Atg7 and the E2-like enzyme Atg10.

Immunogen: Purified recombinant protein expressed in E.coli.

Applications: IHC-P

Recommended Dilutions: IHC: 1/50-1/100

Host Species: Mouse

Clonality: Mouse Monoclonal

Clone ID: 1F8-8H4-4G10

MW: -

Isotype: IgG1

Purification: Affinity Purified

Species Reactivity: Human,Rat,Mouse

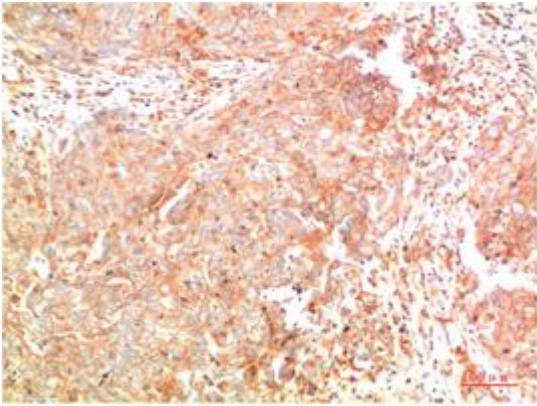
Conjugation: Unconjugated

Modification: Unmodified

Constituents: PBS (without Mg²⁺ and Ca²⁺), pH 7.3 containing 50% glycerol, 0.5% BSA and 0.02% sodium azide

Research Areas: Cell Biology

Storage & Shipping: Store at -20°C. Avoid repeated freezing and thawing



Immunohistochemistry analysis of paraffin-embedded Human Breast Carcinoma Tissue using ATG7 (1F8) antibody. High-pressure and temperature Sodium Citrate pH 6.0 was used for antigen retrieval.