

## ATG7 RABBIT PAB

**Cat.#:** N225874

**Product Name:** Anti-ATG7 Rabbit pAb

**Synonyms:** hAGP7; Ubiquitin-activating enzyme E1-like protein; APG7L

**UNIPROT ID:** O95352

**Background:** The molecular machinery of autophagy was largely discovered in yeast and referred to as autophagy-related (Atg) genes. Formation of the autophagosome involves a ubiquitin-like conjugation system in which Atg12 is covalently bound to Atg5 and targeted to autophagosome vesicles. This conjugation reaction is mediated by the ubiquitin E1-like enzyme Atg7 and the E2-like enzyme Atg10.

**Immunogen:** A synthesized peptide derived from human Atg7(Apg7)

**Applications:** WB,ICC/IF

**Recommended Dilutions:** WB: 1/500-1/1000 IF: 1/50-1/200

**Host Species:** Rabbit

**Clonality:** Rabbit Polyclonal

**Clone ID:** -

**MW:** Calculated MW: 78 kDa; Observed MW: 78 kDa

**Isotype:** IgG

**Purification:** Affinity Chromatography

**Species Reactivity:** Human,Mouse,Rat

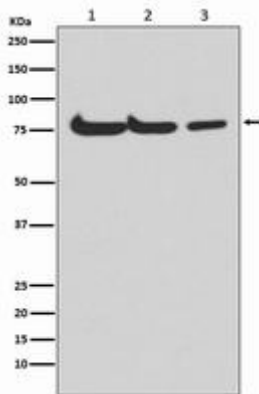
**Conjugation:** Unconjugated

**Modification:** Unmodified

**Constituents:** PBS (without Mg<sup>2+</sup> and Ca<sup>2+</sup>), pH 7.3 containing 50% glycerol, 0.5% BSA and 0.02% sodium azide

**Research Areas:** AutophagyAutophagosome

**Storage & Shipping:** Store at -20°C. Avoid repeated freezing and thawing



Western blot analysis of Atg7(Apg7) in (1) HepG2 lysates; (2) mouse spleen lysates; (3) rat kidney lysates using ATG7 antibody.