

## ATL3 RABBIT PAB

**Cat.#:** S218342

**Product Name:** Anti-ATL3 Rabbit Polyclonal Antibody

**Synonyms:** HSNIF

**UNIPROT ID:** Q6DD88 (Gene Accession - BC077727 )

**Background:** This gene encodes a member of a family of dynamin-like, integral membrane GTPases. The encoded protein is required for the proper formation of the network of interconnected tubules of the endoplasmic reticulum. Mutations in this gene may be associated with hereditary sensory neuropathy type IF. Alternatively spliced transcript variants that encode distinct isoforms have been described.

**Immunogen:** Fusion protein of human ATL3

**Applications:** ELISA, WB, IHC

**Recommended Dilutions:** IHC: 50-300;WB: 500-2000;ELISA: 5000-10000

**Host Species:** Rabbit

**Clonality:** Rabbit Polyclonal

**Isotype:** Immunogen-specific rabbit IgG

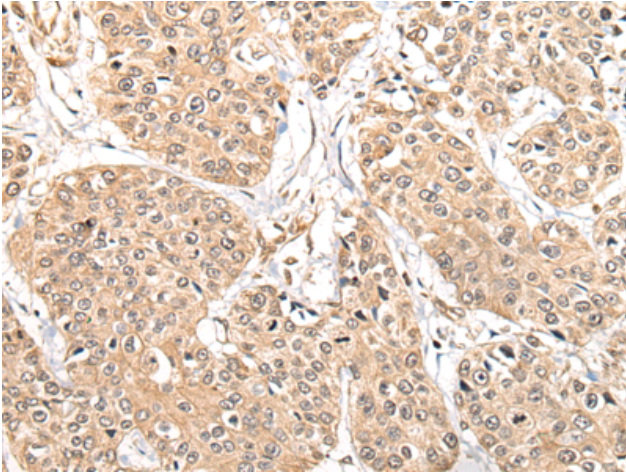
**Purification:** Antigen affinity purification

**Species Reactivity:** Human, Mouse, Rat

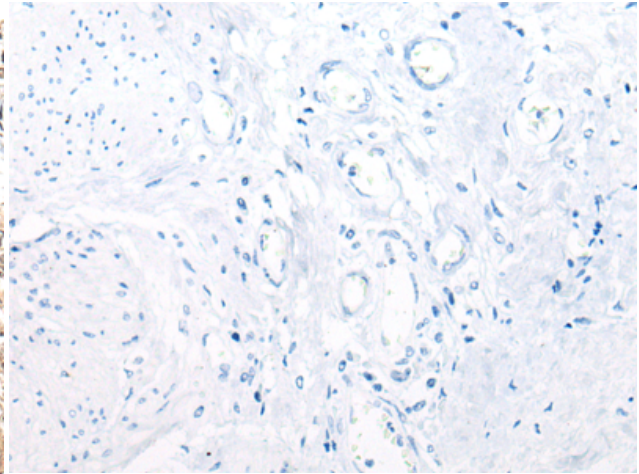
**Constituents:** PBS (without Mg<sup>2+</sup> and Ca<sup>2+</sup>), pH 7.4, 150 mM NaCl, 0.05% Sodium Azide and 40% glycerol

**Research Areas:** Signal Transduction

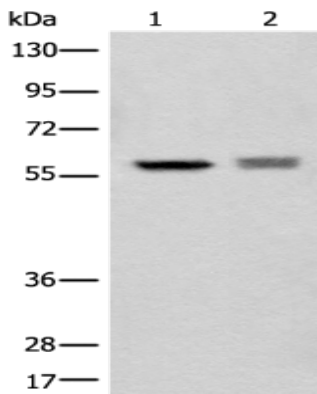
**Storage & Shipping:** Store at -20°C. Avoid repeated freezing and thawing



Immunohistochemistry analysis of paraffin embedded Human prostate cancer tissue using 218342(ATL3 Antibody) at a dilution of 1/85(Cell membrane).



In comparison with the IHC on the left, the same paraffin-embedded Human prostate cancer tissue is first treated with the fusion protein and then with 218342(Anti-ATL3 Antibody) at dilution 1/85.



Gel: 8%SDS-PAGE, Lysate: 40 µg;  
Lane 1-2:HEPG2 and Jurkat cell lysates;  
Primary antibody: 218342(ATL3 Antibody) at dilution 1/800;  
Secondary antibody: Goat anti rabbit IgG at 1/8000 dilution;  
Exposure time: 3 seconds