

ATM RABBIT MAB

Cat.#: N261751

Product Name: Anti-ATM Rabbit Monoclonal Antibody

Synonyms: ATM; Serine-protein kinase ATM; Ataxia telangiectasia mutated; A-T mutated

UNIPROT ID: Q13315

Background: The protein encoded by this gene belongs to the PI3/PI4-kinase family. This protein is an important cell cycle checkpoint kinase that phosphorylates; thus, it functions as a regulator of a wide variety of downstream proteins, including tumor suppressor proteins p53 and BRCA1, checkpoint kinase CHK2, checkpoint proteins RAD17 and RAD9, and DNA repair protein NBS1. This protein and the closely related kinase ATR are thought to be master controllers of cell cycle checkpoint signaling pathways that are required for cell response to DNA damage and for genome stability.

Immunogen: Recombinant protein of human ATM

Applications: WB,IP,ChIP

Recommended Dilutions: WB: 1/500-1/1000 IP: 1/20 ChIP: 1/20

Host Species: Rabbit

Clonality: Rabbit Monoclonal

Clone ID: R05-8D4

MW: Calculated MW: 351 kDa; Observed MW: 351 kDa

Isotype: IgG

Purification: Affinity Purified

Species Reactivity: Human

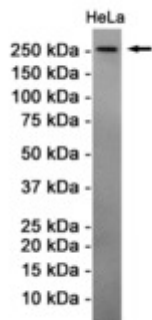
Conjugation: Unconjugated

Modification: Unmodified

Constituents: PBS (without Mg²⁺ and Ca²⁺), pH 7.3 containing 50% glycerol, 0.5% BSA and 0.02% sodium azide

Research Areas: Epigenetics and Nuclear Signaling

Storage & Shipping: Store at -20°C. Avoid repeated freezing and thawing



Western blot analysis of ATM in HeLa lysates using ATM antibody.