

ATP SYNTHASE C RABBIT MAB

Cat.#: N261579

Product Name: Anti-ATP Synthase C Rabbit Monoclonal Antibody

Synonyms: ATP synthase lipid-binding protein; ATP synthase membrane subunit c locus 1

UNIPROT ID: P05496

Background: Mitochondrial membrane ATP synthase (F1F0 ATP synthase or Complex V) produces ATP from ADP in the presence of a proton gradient across the membrane which is generated by electron transport complexes of the respiratory chain.

Immunogen: A synthetic peptide of human ATP synthase C

Applications: WB, ICC/IF

Recommended Dilutions: WB: 1/500-1/1000 IF: 1/50-1/200

Host Species: Rabbit

Clonality: Rabbit Monoclonal

Clone ID: R02-0D4

MW: Calculated MW: 14 kDa; Observed MW: 14 kDa

Isotype: IgG

Purification: Affinity Purified

Species Reactivity: Human

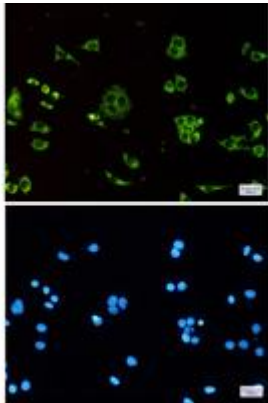
Conjugation: Unconjugated

Modification: Unmodified

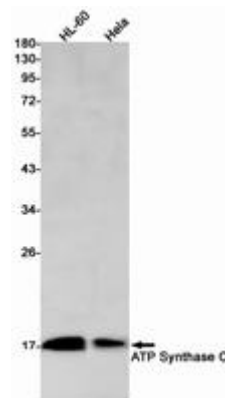
Constituents: PBS (without Mg²⁺ and Ca²⁺), pH 7.3 containing 50% glycerol, 0.5% BSA and 0.02% sodium azide

Research Areas: Signal Transduction

Storage & Shipping: Store at -20°C. Avoid repeated freezing and thawing



Immunocytochemistry analysis of ATP synthase C (green) in Hela using ATP synthase C antibody, and DAPI (blue)



Western blot analysis of ATP Synthase C in HL-60, Hela lysates using ATP Synthase C antibody.