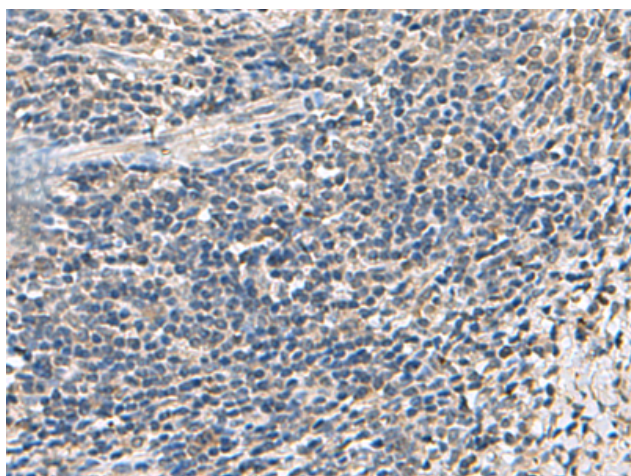
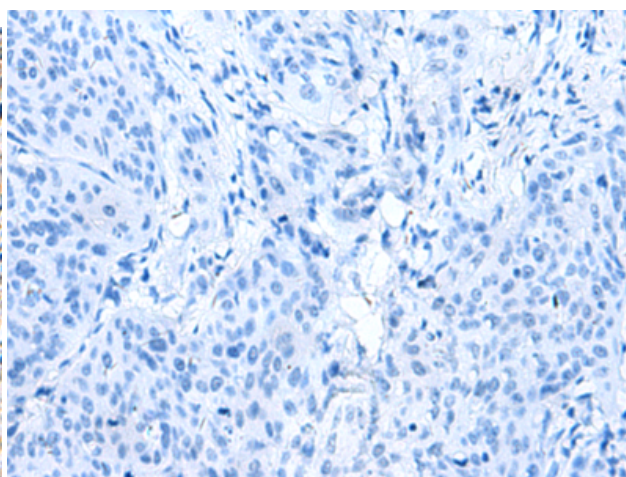


ATP5F1D RABBIT PAB**Cat.#:** S219221**Product Name:** Anti-ATP5F1D Rabbit Polyclonal Antibody**Synonyms:** ATP5D**UNIPROT ID:** P30049 (Gene Accession - BC002389)

Background: This gene encodes a subunit of mitochondrial ATP synthase. Mitochondrial ATP synthase catalyzes ATP synthesis, utilizing an electrochemical gradient of protons across the inner membrane during oxidative phosphorylation. ATP synthase is composed of two linked multi-subunit complexes: the soluble catalytic core, F₁, and the membrane-spanning component, F_o, comprising the proton channel. The catalytic portion of mitochondrial ATP synthase consists of 5 different subunits (alpha, beta, gamma, delta, and epsilon) assembled with a stoichiometry of 3 alpha, 3 beta, and a single representative of the other 3. The proton channel consists of three main subunits (a, b, c). This gene encodes the delta subunit of the catalytic core. Alternatively spliced transcript variants encoding the same isoform have been identified.

Immunogen: Fusion protein of human ATP5F1D**Applications:** ELISA, IHC**Recommended Dilutions:** IHC: 50–200; ELISA: 5000–10000**Host Species:** Rabbit**Clonality:** Rabbit Polyclonal**Isotype:** Immunogen-specific rabbit IgG**Purification:** Antigen affinity purification**Species Reactivity:** Human, Mouse, Rat**Constituents:** PBS (without Mg²⁺ and Ca²⁺), pH 7.4, 150 mM NaCl, 0.05% Sodium Azide and 40% glycerol**Research Areas:** Metabolism**Storage & Shipping:** Store at –20°C. Avoid repeated freezing and thawing

Immunohistochemistry analysis of paraffin embedded Human cervical cancer tissue using 219221(ATP5F1D Antibody) at a dilution of 1/55(Cytoplasm).



In comparison with the IHC on the left, the same paraffin-embedded Human cervical cancer tissue is first treated with the fusion protein and then with 219221(Anti-ATP5F1D Antibody) at dilution 1/55.

