

ATP5IF1 RABBIT PAB

Cat.#: S216880

Product Name: Anti-ATP5IF1 Rabbit Polyclonal Antibody

Synonyms: IP; ATP1; ATP1P; ATP1F1

UNIPROT ID: Q9UII2 (Gene Accession - BC009677)

Background: This gene encodes a mitochondrial ATPase inhibitor. Alternative splicing occurs at this locus and three transcript variants encoding distinct isoforms have been identified.

Immunogen: Fusion protein of human ATP5IF1

Applications: ELISA, WB, IHC

Recommended Dilutions: IHC: 50-200;WB: 500-2000;ELISA: 5000-10000

Host Species: Rabbit

Clonality: Rabbit Polyclonal

Isotype: Immunogen-specific rabbit IgG

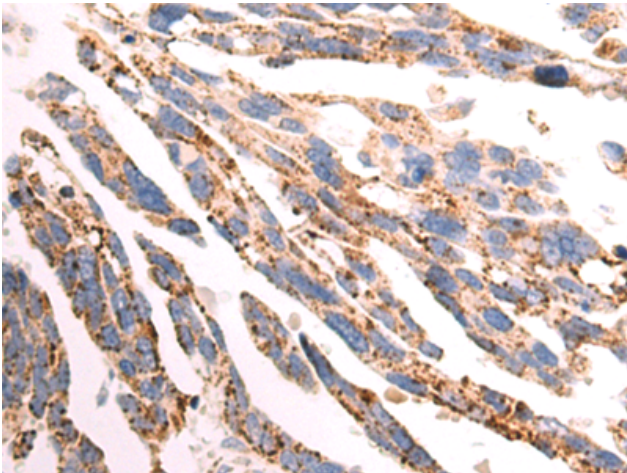
Purification: Antigen affinity purification

Species Reactivity: Human

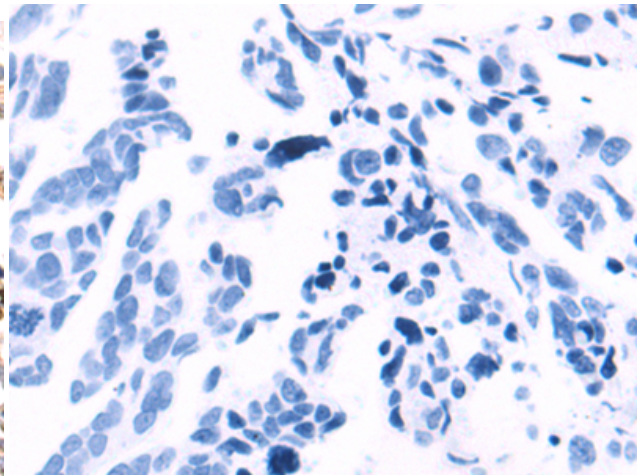
Constituents: PBS (without Mg²⁺ and Ca²⁺), pH 7.4, 150 mM NaCl, 0.05% Sodium Azide and 40% glycerol

Research Areas: Metabolism

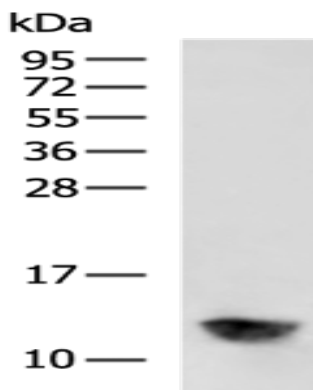
Storage & Shipping: Store at -20°C. Avoid repeated freezing and thawing



Immunohistochemistry analysis of paraffin embedded Human colorectal cancer tissue using 216880(ATP5IF1 Antibody) at a dilution of 1/85(Cytoplasm).



In comparison with the IHC on the left, the same paraffin-embedded Human colorectal cancer tissue is first treated with the fusion protein and then with 216880(Anti-ATP5IF1 Antibody) at dilution 1/85.



Gel: 12%SDS-PAGE, Lysate: 40 μ g;
Lane: K562 cell lysate;
Primary antibody: 216880(ATP5IF1 Antibody) at dilution 1/550;
Secondary antibody: HRP-conjugated Goat anti rabbit IgG at 1/5000 dilution;
Exposure time: 90 seconds