

## ATP5PO RABBIT PAB

**Cat.#:** S212962

**Product Name:** Anti-ATP5PO Rabbit Polyclonal Antibody

**Synonyms:** ATPO; OSCP; ATP5O; HMC08D05

**UNIPROT ID:** P48047 (Gene Accession - BC021233 )

**Background:** The protein encoded by this gene is a component of the F-type ATPase found in the mitochondrial matrix. F-type ATPases are composed of a catalytic core and a membrane proton channel. The encoded protein appears to be part of the connector linking these two components and may be involved in transmission of conformational changes or proton conductance. [provided by RefSeq, Jul 2008]

**Immunogen:** Fusion protein of human ATP5PO

**Applications:** ELISA, WB, IHC

**Recommended Dilutions:** IHC: 100-300;WB: 1000-5000;ELISA: 5000-10000

**Host Species:** Rabbit

**Clonality:** Rabbit Polyclonal

**Isotype:** Immunogen-specific rabbit IgG

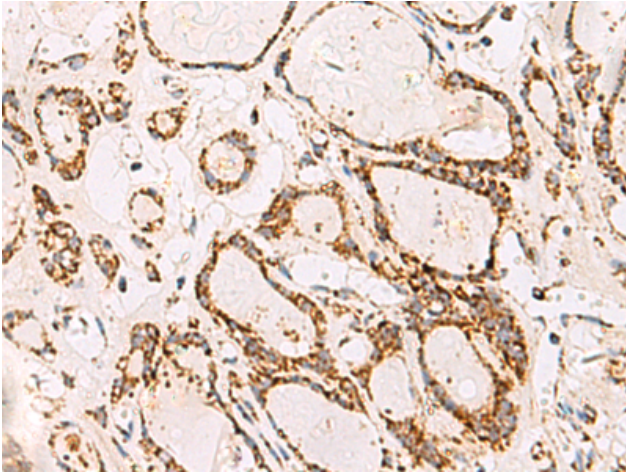
**Purification:** Antigen affinity purification

**Species Reactivity:** Human, Mouse

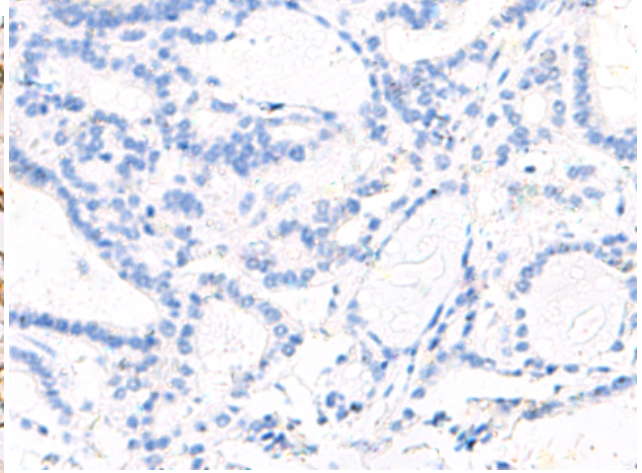
**Constituents:** PBS (without Mg<sup>2+</sup> and Ca<sup>2+</sup>), pH 7.4, 150 mM NaCl, 0.05% Sodium Azide and 40% glycerol

**Research Areas:** Metabolism

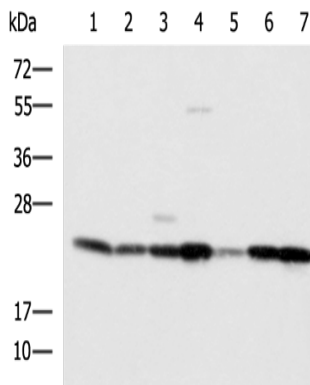
**Storage & Shipping:** Store at -20°C. Avoid repeated freezing and thawing



Immunohistochemistry analysis of paraffin embedded Human thyroid cancer tissue using 212962(ATP5PO Antibody) at a dilution of 1/90(Cytoplasm).



In comparison with the IHC on the left, the same paraffin-embedded Human thyroid cancer tissue is first treated with the fusion protein and then with 212962(Anti-ATP5PO Antibody) at dilution 1/90.



Gel: 12%SDS-PAGE, Lysate: 40  $\mu$ g;  
Lane 1-7: SKOV3, Hela cell, Mouse liver tissue,  
Mouse heart tissue, Human placenta tissue,  
HepG2 cell, Human heart tissue lysates;  
Primary antibody: 212962(ATP5PO Antibody)  
at dilution 1/1250;  
Secondary antibody: HRP-conjugated Goat  
anti rabbit IgG at 1/5000 dilution;  
Exposure time: 5 seconds