

## ATPB RABBIT MAB

**Cat.#:** N261897

**Product Name:** Anti-ATPB Rabbit Monoclonal Antibody

**Synonyms:** ATP5B; ATPMB; ATPSB; HEL-S-271

**UNIPROT ID:** P06576

**Background:** Rotation of the central stalk against the surrounding alpha(3)beta(3) subunits leads to hydrolysis of ATP in three separate catalytic sites on the beta subunits.

**Immunogen:** A synthetic peptide of human ATPB

**Applications:** WB,IHC-F,IHC-P,ICC/IF,IP

**Recommended Dilutions:** WB: 1/500-1/1000 IHC: 1/50-1/100 IF: 1/50-1/200 IP: 1/20

**Host Species:** Rabbit

**Clonality:** Rabbit Monoclonal

**Clone ID:** R01-4G1

**MW:** Calculated MW: 57 kDa; Observed MW: 52 kDa

**Isotype:** IgG

**Purification:** Affinity Purified

**Species Reactivity:** Human,Mouse,Rat,Monkey

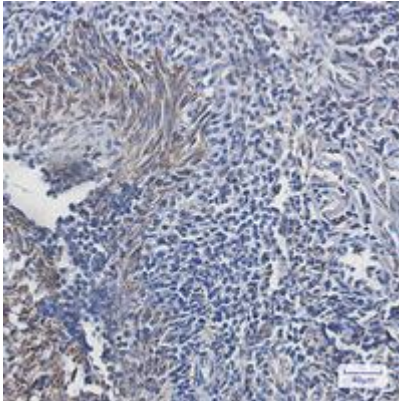
**Conjugation:** Unconjugated

**Modification:** Unmodified

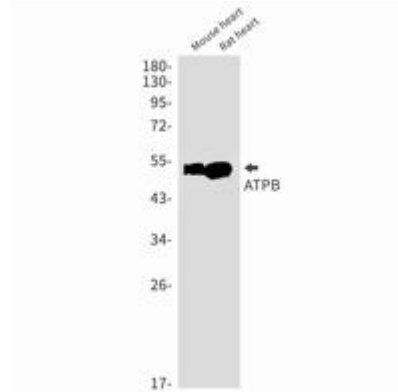
**Constituents:** PBS (without Mg<sup>2+</sup> and Ca<sup>2+</sup>), pH 7.3 containing 50% glycerol, 0.5% BSA and 0.02% sodium azide

**Research Areas:** Tags & Cell Markers

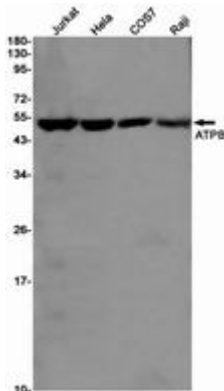
**Storage & Shipping:** Store at -20°C. Avoid repeated freezing and thawing



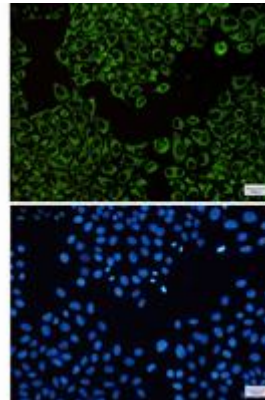
Immunohistochemistry analysis of paraffin-embedded Human tonsil using ATPB antibody. High-pressure and temperature Sodium Citrate pH 6.0 was used for antigen retrieval.



Western blot analysis of ATPB in mouse heart, rat heart lysates using ATPB antibody.



Western blot analysis of ATPB in Jurkat, HeLa, COS7, Raji lysates using ATPB antibody.



Immunocytochemistry analysis of ATPB (green) in HeLa using ATPB antibody, and DAPI (blue).