

## AXIN 2 RABBIT PAB

**Cat.#:** N225809

**Product Name:** Anti-Axin 2 Rabbit pAb

**Synonyms:** Axil; Axin like protein; Axin2; Axis inhibition protein 2; Conductin

**UNIPROT ID:** Q9Y2T1

**Background:** Axin1 (Axis inhibition protein 1) and Axin2 are multidomain scaffold proteins that negatively regulate Wnt signaling. Axin1 interacts with APC, GSK-3 $\beta$ , Dvl, and  $\beta$ -catenin and promotes the GSK-3 $\beta$ -mediated phosphorylation and subsequent degradation of  $\beta$ -catenin. Down-regulates beta-catenin.

**Immunogen:** A synthesized peptide derived from human Axin2

**Applications:** WB,IHC-P,ICC/IF

**Recommended Dilutions:** WB: 1/500-1/1000 IHC: 1/50-1/100 IF: 1/50-1/200

**Host Species:** Rabbit

**Clonality:** Rabbit Polyclonal

**Clone ID:** -

**MW:** Calculated MW: 94 kDa; Observed MW: 94 kDa

**Isotype:** IgG

**Purification:** Affinity Chromatography

**Species Reactivity:** Human,Mouse,Rat

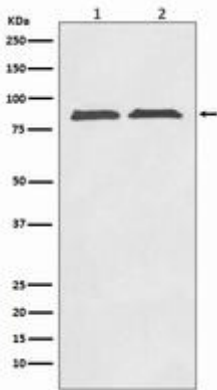
**Conjugation:** Unconjugated

**Modification:** Unmodified

**Constituents:** PBS (without Mg<sup>2+</sup> and Ca<sup>2+</sup>), pH 7.3 containing 50% glycerol, 0.5% BSA and 0.02% sodium azide

**Research Areas:** Cell Biology

**Storage & Shipping:** Store at -20°C. Avoid repeated freezing and thawing



Western blot analysis of Axin2 in (1) SW480 lysates; (2) PC-12 lysates using Axin 2 antibody.