

B3GALT2 RABBIT PAB

Cat.#: N225248

Product Name: Anti-B3GALT2 Rabbit pAb

Synonyms: B3GALT2; Beta-1; 3-galactosyltransferase 2; Beta-1; 3-GalTase 2; Beta3Gal-T2; Beta3GalT2; UDP-galactose:2-acetamido-2-deoxy-D-glucose 3beta-galactosyltransferase 2

UNIPROT ID: O43825

Background: Beta-1,3-galactosyltransferase that transfers galactose from UDP-galactose to substrates with a terminal beta-N-acetylglucosamine (beta-GlcNAc) residue.

Immunogen: The antiserum was produced against synthesized peptide derived from human B3GALT2. AA range:373-422

Applications: IHC-P,IHC-F,ICC/IF,ELISA

Recommended Dilutions: IHC: 1/50-1/100 IF: 1/50-1/200 ELISA: 1/10000

Host Species: Rabbit

Clonality: Rabbit Polyclonal

Clone ID: -

MW: -

Isotype: IgG

Purification: Affinity Purified

Species Reactivity: Human,Mouse

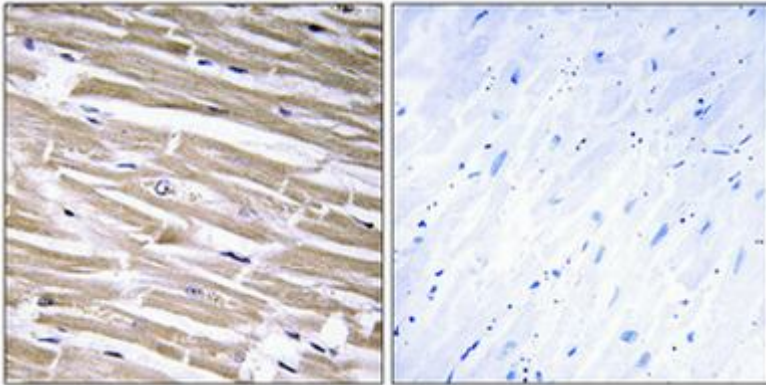
Conjugation: Unconjugated

Modification: Unmodified

Constituents: PBS (without Mg²⁺ and Ca²⁺), pH 7.3 containing 50% glycerol, 0.5% BSA and 0.02% sodium azide

Research Areas: Cell Biology

Storage & Shipping: Store at -20°C. Avoid repeated freezing and thawing



Immunohistochemistry analysis of paraffin-embedded Human heart using B3GALT2 antibody. High-pressure and temperature Tris-EDTA pH 8.0 was used for antigen retrieval. Sample with blocking peptide on the right.