

## B4GAT1 RABBIT PAB

**Cat.#:** S221602

**Product Name:** Anti-B4GAT1 Rabbit Polyclonal Antibody

**Synonyms:** iGAT; iGNT; B3GNT1; B3GNT6; B3GN-T1; MDDGA13; BETA3GNT1

**UNIPROT ID:** O43505 (Gene Accession - NP\_006867 )

**Background:** This gene encodes a member of the beta-1,3-N-acetylglucosaminyltransferase family. This enzyme is a type II transmembrane protein. It is essential for the synthesis of poly-N-acetyllactosamine, a determinant for the blood group i antigen.

**Immunogen:** Synthetic peptide of human B4GAT1

**Applications:** ELISA, WB, IHC

**Recommended Dilutions:** IHC: 20-100;WB: 200-1000;ELISA: 5000-10000

**Host Species:** Rabbit

**Clonality:** Rabbit Polyclonal

**Isotype:** Immunogen-specific rabbit IgG

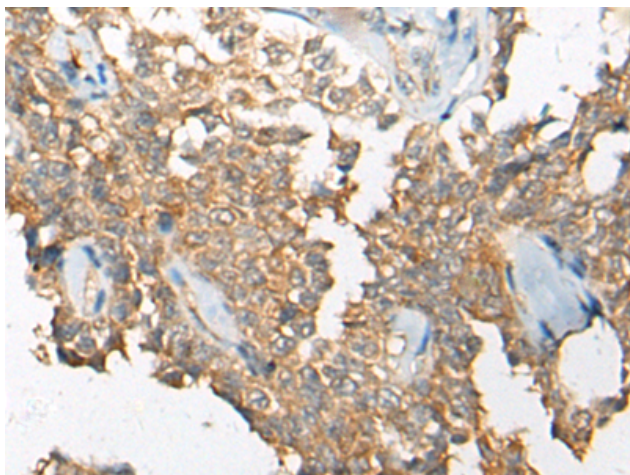
**Purification:** Antigen affinity purification

**Species Reactivity:** Human, Mouse

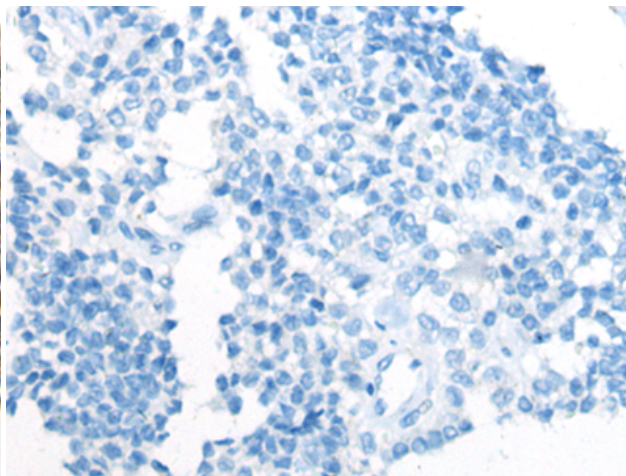
**Constituents:** PBS (without Mg<sup>2+</sup> and Ca<sup>2+</sup>), pH 7.4, 150 mM NaCl, 0.05% Sodium Azide and 40% glycerol

**Research Areas:** Cell Biology

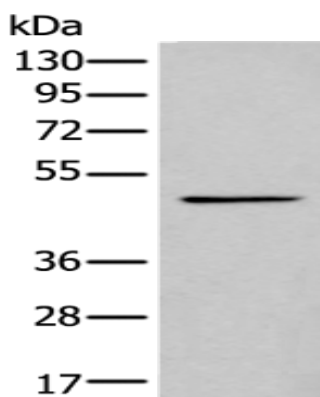
**Storage & Shipping:** Store at -20°C. Avoid repeated freezing and thawing



Immunohistochemistry analysis of paraffin embedded Human ovarian cancer tissue using 221602(B4GAT1 Antibody) at a dilution of 1/20(Cell membrane).



In comparison with the IHC on the left, the same paraffin-embedded Human ovarian cancer tissue is first treated with the synthetic peptide and then with 221602(Anti-B4GAT1 Antibody) at dilution 1/20.



Gel: 8%SDS-PAGE, Lysate: 40  $\mu$ g;  
Lane: Mouse brain tissue lysate;  
Primary antibody: 221602(B4GAT1 Antibody) at dilution 1/300;  
Secondary antibody: Goat anti rabbit IgG at 1/8000 dilution;  
Exposure time: 5 seconds