

## BACE2 RABBIT PAB

**Cat.#:** S221604

**Product Name:** Anti-BACE2 Rabbit Polyclonal Antibody

**Synonyms:** ASP1; BAE2; DRAP; AEPLC; ALP56; ASP21; CDA13; CEAP1

**UNIPROT ID:** Q9Y5Z0 (Gene Accession - NP\_036237 )

**Background:** This gene encodes an integral membrane glycoprotein that functions as an aspartic protease. The encoded protein cleaves amyloid precursor protein into amyloid beta peptide, which is a critical step in the etiology of Alzheimer's disease and Down syndrome. The protein precursor is further processed into an active mature peptide. Alternative splicing results in multiple transcript variants.

**Immunogen:** Synthetic peptide of human BACE2

**Applications:** ELISA, IHC

**Recommended Dilutions:** IHC: Oct-50; ELISA: 5000-10000

**Host Species:** Rabbit

**Clonality:** Rabbit Polyclonal

**Isotype:** Immunogen-specific rabbit IgG

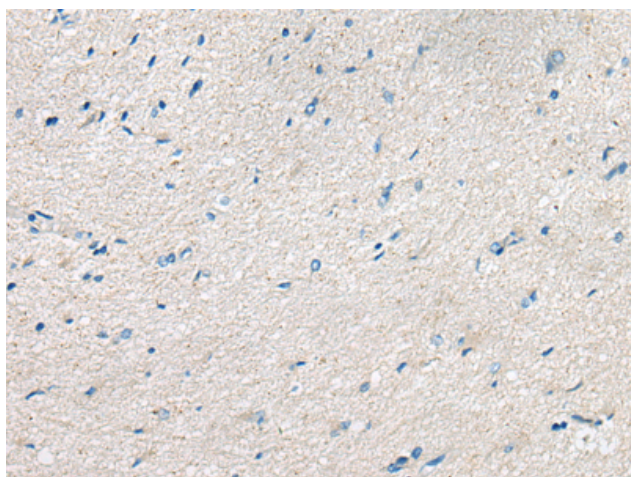
**Purification:** Antigen affinity purification

**Species Reactivity:** Human, Mouse, Rat

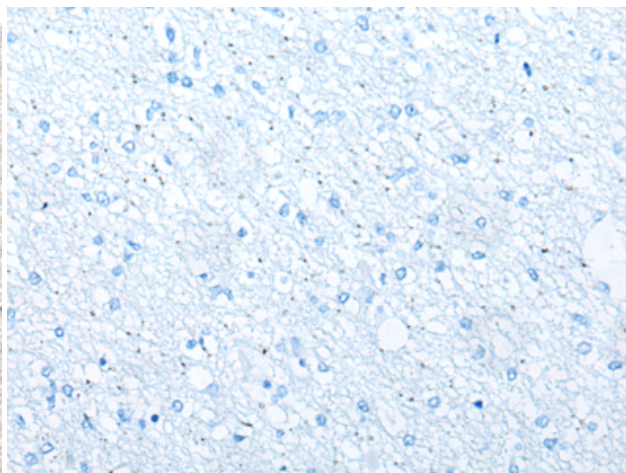
**Constituents:** PBS (without Mg<sup>2+</sup> and Ca<sup>2+</sup>), pH 7.4, 150 mM NaCl, 0.05% Sodium Azide and 40% glycerol

**Research Areas:** Cell Biology, Neuroscience

**Storage & Shipping:** Store at -20°C. Avoid repeated freezing and thawing



Immunohistochemistry analysis of paraffin embedded Human brain tissue using 221604(BACE2 Antibody) at a dilution of 1/25(Cytoplasm).



In comparison with the IHC on the left, the same paraffin-embedded Human brain tissue is first treated with the synthetic peptide and then with 221604(Anti-BACE2 Antibody) at dilution 1/25.