

## BACH2 RABBIT PAB

**Cat.#:** S221605

**Product Name:** Anti-BACH2 Rabbit Polyclonal Antibody

**Synonyms:** IMD60; BTBD25

**UNIPROT ID:** Q9BYV9 (Gene Accession - NP\_068585 )

**Background:** Enables sequence-specific double-stranded DNA binding activity. Involved in primary adaptive immune response involving T cells and B cells. Located in cytosol and nucleoplasm. Implicated in immunodeficiency 60.

**Immunogen:** Synthetic peptide of human BACH2

**Applications:** ELISA, IHC

**Recommended Dilutions:** IHC: 50-200; ELISA: 5000-10000

**Host Species:** Rabbit

**Clonality:** Rabbit Polyclonal

**Isotype:** Immunogen-specific rabbit IgG

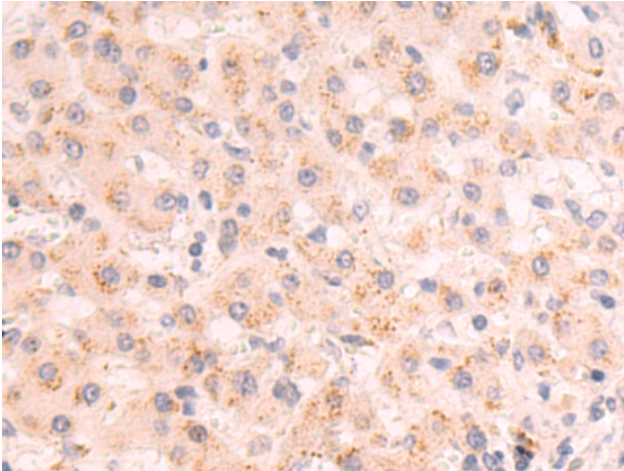
**Purification:** Antigen affinity purification

**Species Reactivity:** Human, Mouse

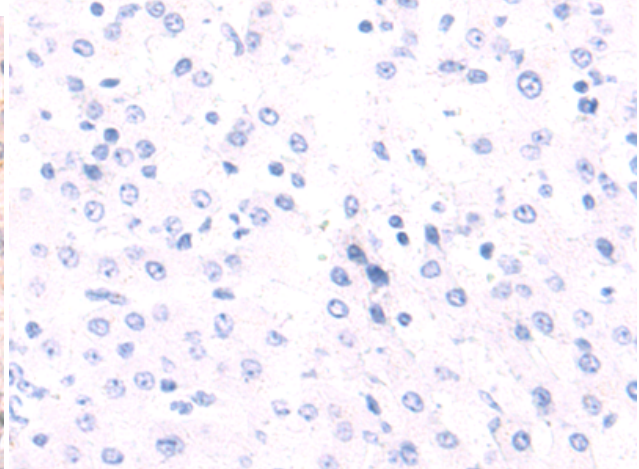
**Constituents:** PBS (without Mg<sup>2+</sup> and Ca<sup>2+</sup>), pH 7.4, 150 mM NaCl, 0.05% Sodium Azide and 40% glycerol

**Research Areas:** Epigenetics and Nuclear Signaling, Metabolism, Cell Biology, Immunology

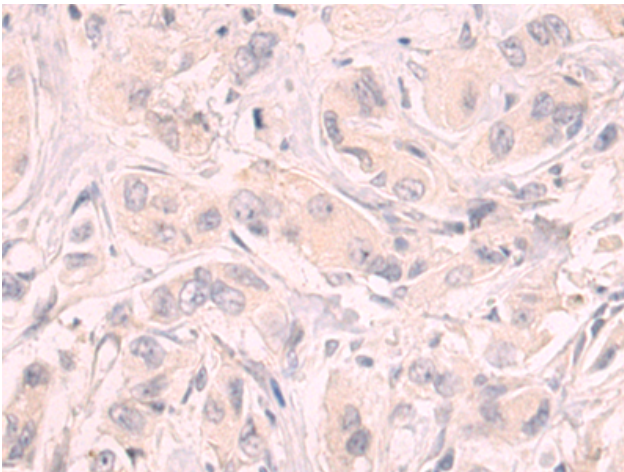
**Storage & Shipping:** Store at -20°C. Avoid repeated freezing and thawing



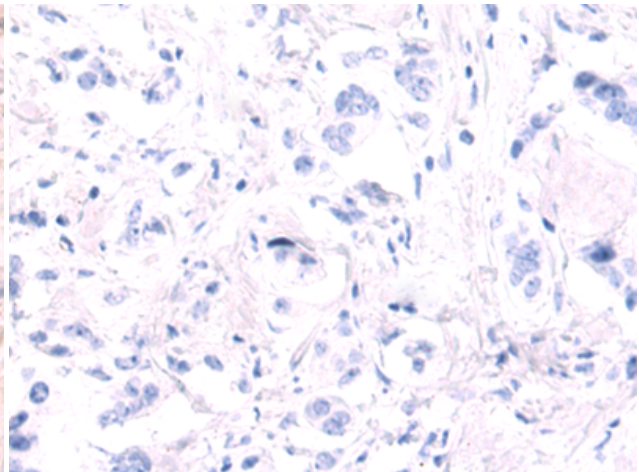
Immunohistochemistry analysis of paraffin embedded Human liver cancer tissue using 221605 (BACH2 Antibody) at a dilution of 1/50 (Cytoplasm).



In comparison with the IHC on the left, the same paraffin-embedded Human liver cancer tissue is first treated with the synthetic peptide and then with 221605 (Anti-BACH2 Antibody) at dilution 1/50.



The image on the left is immunohistochemistry of paraffin-embedded Human breast cancer tissue using 221605 (Anti-BACH2 Antibody) at a dilution of 1/50.



In comparison with the IHC on the left, the same paraffin-embedded Human breast cancer tissue is first treated with synthetic peptide and then with D263261 (Anti-BACH2 Antibody) at dilution 1/50.