

## BAG1 RABBIT PAB

**Cat.#:** S216291

**Product Name:** Anti-BAG1 Rabbit Polyclonal Antibody

**Synonyms:** HAP; BAG-1; RAP46

**UNIPROT ID:** Q99933 (Gene Accession - BC001936 )

**Background:** The oncogene BCL2 is a membrane protein that blocks a step in a pathway leading to apoptosis or programmed cell death. The protein encoded by this gene binds to BCL2 and is referred to as BCL2-associated athanogene. It enhances the anti-apoptotic effects of BCL2 and represents a link between growth factor receptors and anti-apoptotic mechanisms. Multiple protein isoforms are encoded by this mRNA through the use of a non-AUG (CUG) initiation codon, and three alternative downstream AUG initiation codons. A related pseudogene has been defined on chromosome X.

**Immunogen:** Fusion protein of human BAG1

**Applications:** ELISA, WB, IHC

**Recommended Dilutions:** IHC: 50-200;WB: 500-2000;ELISA: 2000-5000

**Host Species:** Rabbit

**Clonality:** Rabbit Polyclonal

**Isotype:** Immunogen-specific rabbit IgG

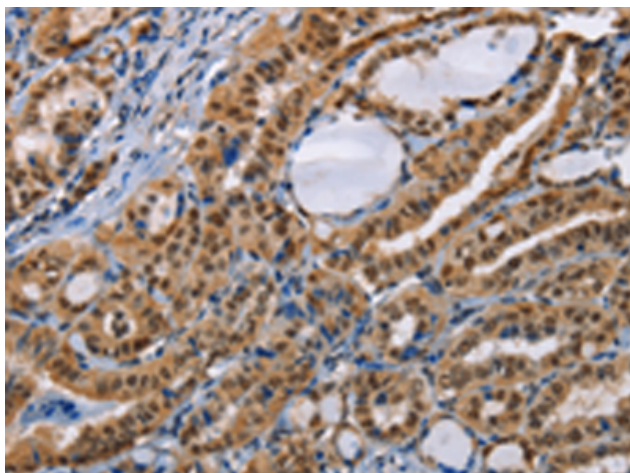
**Purification:** Antigen affinity purification

**Species Reactivity:** Human

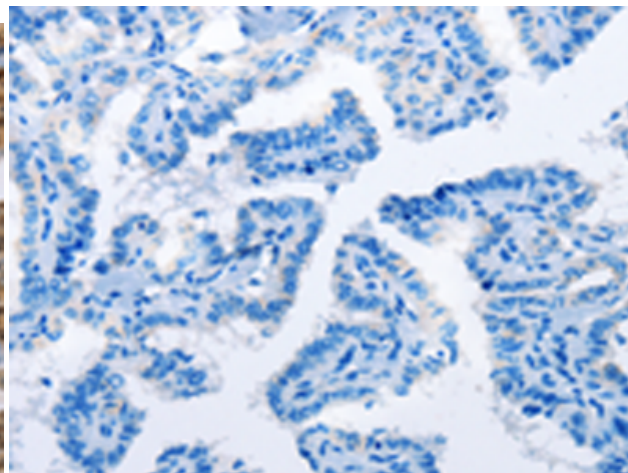
**Constituents:** PBS (without Mg<sup>2+</sup> and Ca<sup>2+</sup>), pH 7.4, 150 mM NaCl, 0.05% Sodium Azide and 40% glycerol

**Research Areas:** Cancer, Cardiovascular

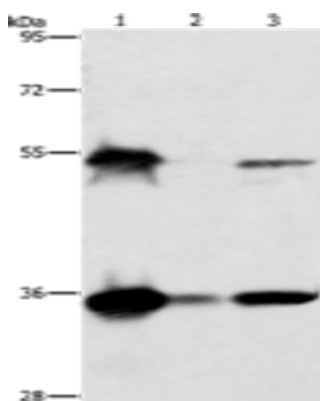
**Storage & Shipping:** Store at -20°C. Avoid repeated freezing and thawing



Immunohistochemistry analysis of paraffin embedded Human thyroid cancer tissue using 216291(BAG1 Antibody) at a dilution of 1/40(Nucleus).



In comparison with the IHC on the left, the same paraffin-embedded Human thyroid cancer tissue is first treated with the fusion protein and then with 216291(Anti-BAG1 Antibody) at dilution 1/40.



Gel: 8%SDS-PAGE, Lysate: 50 µg;  
Lane 1-3: HeLa cells, K562 cells, Raji cells;  
Primary antibody: 216291(BAG1 Antibody) at dilution 1/750;  
Secondary antibody: Goat anti rabbit IgG at 1/8000 dilution;  
Exposure time: 2 seconds