

BAG2 RABBIT PAB

Cat.#: S221250

Product Name: Anti-BAG2 Rabbit Polyclonal Antibody

Synonyms: BAG-2; dJ41711.2

UNIPROT ID: O95816 (Gene Accession - NP_004273)

Background: BAG proteins compete with Hip for binding to the Hsc70/Hsp70 ATPase domain and promote substrate release. All the BAG proteins have an approximately 45-amino acid BAG domain near the C terminus but differ markedly in their N-terminal regions. The predicted BAG2 protein contains 211 amino acids. The BAG domains of BAG1, BAG2, and BAG3 interact specifically with the Hsc70 ATPase domain in vitro and in mammalian cells. All 3 proteins bind with high affinity to the ATPase domain of Hsc70 and inhibit its chaperone activity in a Hip-repressible manner.

Immunogen: Synthetic peptide of human BAG2

Applications: ELISA, WB, IHC

Recommended Dilutions: IHC: 30-150;WB: 500-2000;ELISA: 5000-10000

Host Species: Rabbit

Clonality: Rabbit Polyclonal

Isotype: Immunogen-specific rabbit IgG

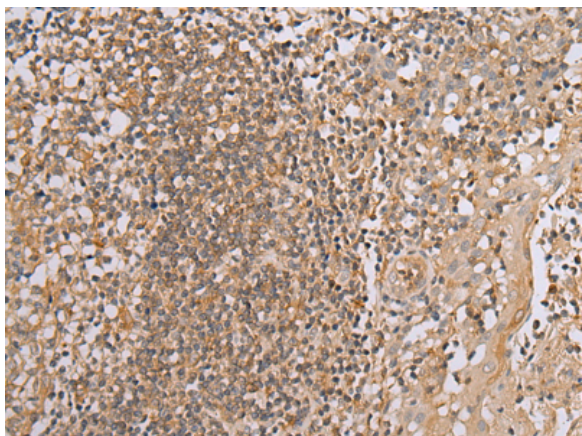
Purification: Antigen affinity purification

Species Reactivity: Human

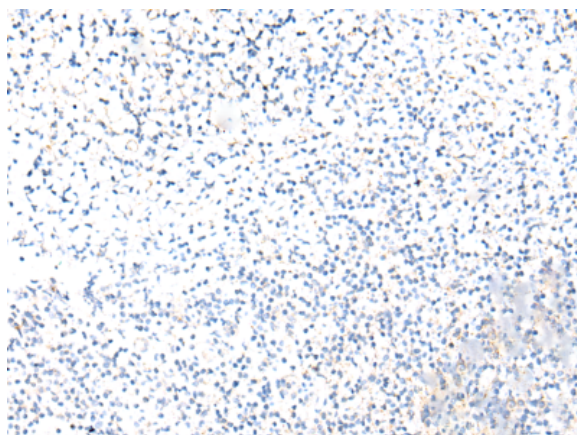
Constituents: PBS (without Mg²⁺ and Ca²⁺), pH 7.4, 150 mM NaCl, 0.05% Sodium Azide and 40% glycerol

Research Areas: Signal Transduction, Cancer

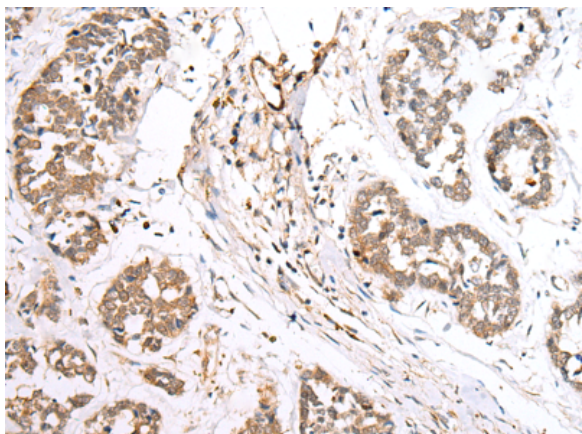
Storage & Shipping: Store at -20°C. Avoid repeated freezing and thawing



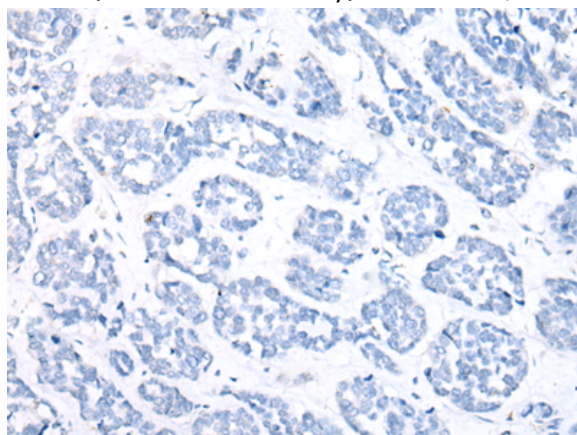
Immunohistochemistry analysis of paraffin embedded Human tonsil tissue using 221250(BAG2 Antibody) at a dilution of 1/40(Cytoplasm).



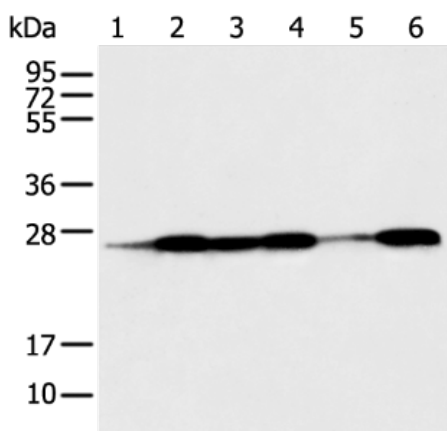
In comparison with the IHC on the left, the same paraffin-embedded Human tonsil tissue is first treated with the synthetic peptide and then with 221250(Anti-BAG2 Antibody) at dilution 1/40.



The image on the left is immunohistochemistry of paraffin-embedded Human esophagus cancer tissue using 221250(Anti-BAG2 Antibody) at a dilution of 1/40.



In comparison with the IHC on the left, the same paraffin-embedded Human esophagus cancer tissue is first treated with synthetic peptide and then with D262766(Anti-BAG2 Antibody) at dilution 1/40.



Gel: 12%SDS-PAGE, Lysate: 40 µg;
 Lane 1-6: Human fetal muscle tissue, HEPG2, Jurkat, Hela, A431 and A549 cell;
 Primary antibody: 221250(BAG2 Antibody) at dilution 1/550;
 Secondary antibody: Goat anti rabbit IgG at 1/8000 dilution;
 Exposure time: 3 seconds



Product Description

Pioneering GTPase and Oncogene Product Development since 2010
