

## BAGE2 RABBIT PAB

**Cat.#:** S221606

**Product Name:** Anti-BAGE2 Rabbit Polyclonal Antibody

**Synonyms:** CT2.2

**UNIPROT ID:** Q86Y30

**Background:** Members of the BAGE gene family encode antigens that are recognized by cytotoxic T lymphocytes and are also known as CT (cancer/testis) antigens. Generated by juxtacentromeric shuffling of the MLL3 gene, the ancestral BAGE gene was expanded by acrocentric exchanges and/or juxtacentromeric movements. Generally, BAGE proteins are silent in all normal tissues with the exception of testis. BAGE2 (B melanoma antigen 2), also known as Cancer/testis antigen 2.2, is 109 amino acid secreted proteins that is expressed in 22% of melanomas, lung and bladder carcinomas, and is also expressed in normal testis tissue. Like the genes encoding MAGE proteins, BAGE genes are most likely silenced by DNA methylation and/or chromatin compaction in normal tissues other than testis.

**Immunogen:** Synthetic peptide of human BAGE2

**Applications:** ELISA, IHC

**Recommended Dilutions:** IHC: 25-100; ELISA: 5000-10000

**Host Species:** Rabbit

**Clonality:** Rabbit Polyclonal

**Isotype:** Immunogen-specific rabbit IgG

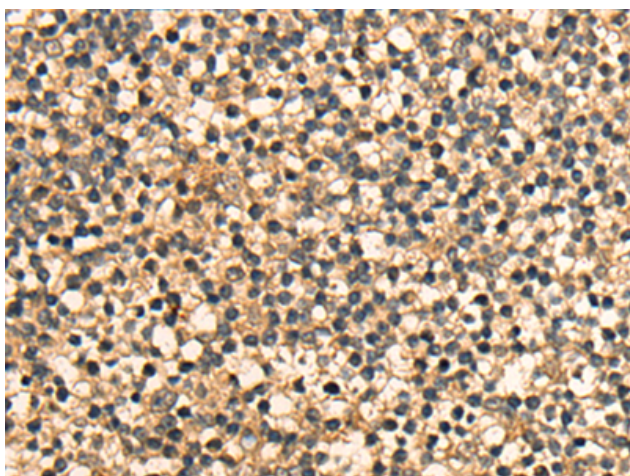
**Purification:** Antigen affinity purification

**Species Reactivity:** Human

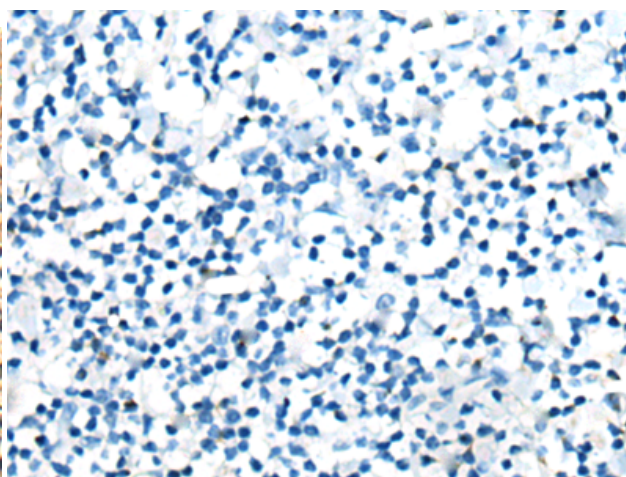
**Constituents:** PBS (without Mg<sup>2+</sup> and Ca<sup>2+</sup>), pH 7.4, 150 mM NaCl, 0.05% Sodium Azide and 40% glycerol

**Research Areas:** Cancer

**Storage & Shipping:** Store at -20°C. Avoid repeated freezing and thawing



Immunohistochemistry analysis of paraffin embedded Human tonsil tissue using 221606(BAGE2 Antibody) at a dilution of 1/25 (Secreted).



In comparison with the IHC on the left, the same paraffin-embedded Human tonsil tissue is first treated with the synthetic peptide and then with 221606 (Anti-BAGE2 Antibody) at dilution 1/25.



# Product Description

Pioneering GTPase and Oncogene Product Development since 2010

---