

BARX1 RABBIT MAB

Cat.#: N263231

Product Name: Anti-BarX1 Rabbit Monoclonal Antibody

Synonyms: Homeobox protein BarH-like 1

UNIPROT ID: Q9HBUI

Background: Transcription factor, which is involved in craniofacial development, in odontogenesis and in stomach organogenesis.

Immunogen: A synthetic peptide of human BarX1

Applications: WB,IP

Recommended Dilutions: WB: 1/500-1/1000 IP: 1/20

Host Species: Rabbit

Clonality: Rabbit Monoclonal

Clone ID: R01-3A3

MW: Calculated MW: 27 kDa; Observed MW: 32 kDa

Isotype: IgG

Purification: Affinity Purified

Species Reactivity: Human,Rat,Hamster

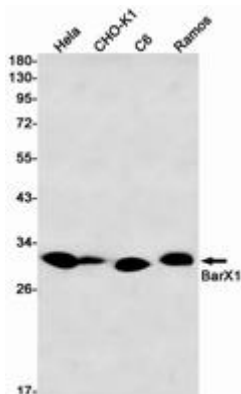
Conjugation: Unconjugated

Modification: Unmodified

Constituents: PBS (without Mg²⁺ and Ca²⁺), pH 7.3 containing 50% glycerol, 0.5% BSA and 0.02% sodium azide

Research Areas: Epigenetics and Nuclear Signaling

Storage & Shipping: Store at -20°C. Avoid repeated freezing and thawing



Western blot analysis of BarX1 in HeLa, CHO-K1, C6, Ramos lysates using BarX1 antibody.



Product Description

Pioneering GTPase and Oncogene Product Development since 2010
