

BATF RABBIT PAB

Cat.#: S218351

Product Name: Anti-BATF Rabbit Polyclonal Antibody

Synonyms: SFA2; B-ATF; BATF1; SFA-2

UNIPROT ID: Q16520 (Gene Accession - BC032294)

Background: The protein encoded by this gene is a nuclear basic leucine zipper protein that belongs to the AP-1/ATF superfamily of transcription factors. The leucine zipper of this protein mediates dimerization with members of the Jun family of proteins. This protein is thought to be a negative regulator of AP-1/ATF transcriptional events.

Immunogen: Full length fusion protein

Applications: ELISA, IHC

Recommended Dilutions: IHC: 30-150; ELISA: 5000-10000

Host Species: Rabbit

Clonality: Rabbit Polyclonal

Isotype: Immunogen-specific rabbit IgG

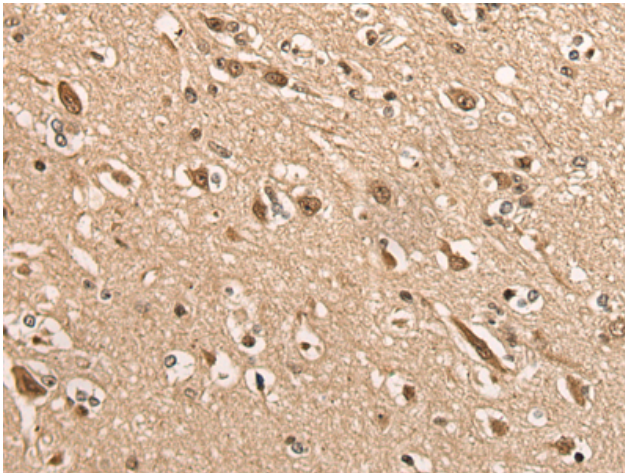
Purification: Antigen affinity purification

Species Reactivity: Human, Mouse, Rat

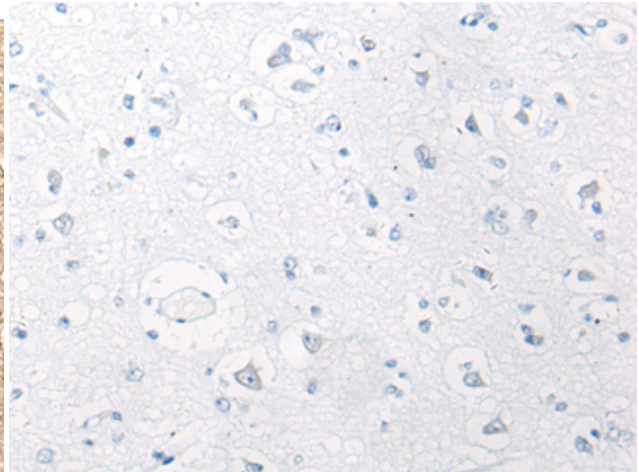
Constituents: PBS (without Mg²⁺ and Ca²⁺), pH 7.4, 150 mM NaCl, 0.05% Sodium Azide and 40% glycerol

Research Areas: Epigenetics and Nuclear Signaling

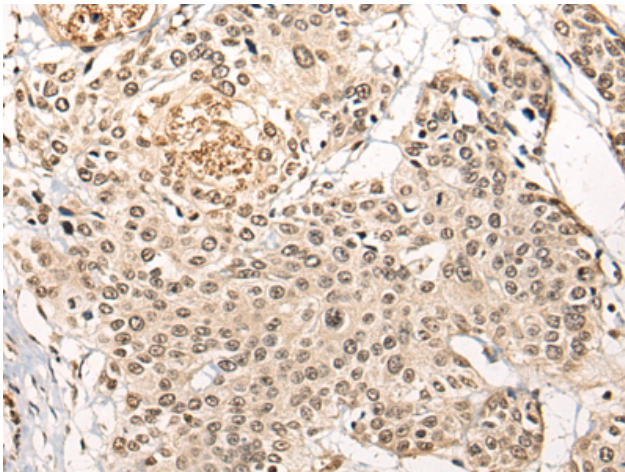
Storage & Shipping: Store at -20°C. Avoid repeated freezing and thawing



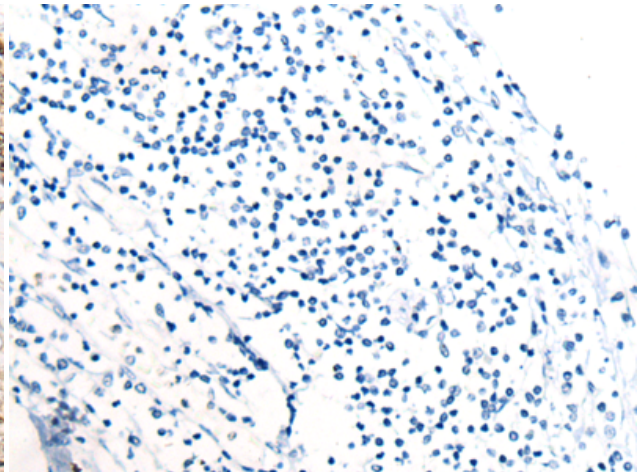
Immunohistochemistry analysis of paraffin embedded Human brain tissue using 218351(BATF Antibody) at a dilution of 1/45(Nucleus and Cytoplasm).



In comparison with the IHC on the left, the same paraffin-embedded Human brain tissue is first treated with the fusion protein and then with 218351(Anti-BATF Antibody) at dilution 1/45.



The image on the left is immunohistochemistry of paraffin-embedded Human prostate cancer tissue using 218351(Anti-BATF Antibody) at a dilution of 1/45.



In comparison with the IHC on the left, the same paraffin-embedded Human prostate cancer tissue is first treated with fusion protein and then with D224232(Anti-BATF Antibody) at dilution 1/45.