

BBX RABBIT PAB

Cat.#: S218354

Product Name: Anti-BBX Rabbit Polyclonal Antibody

Synonyms: HBP2; ARTC1; MDS001; HSPC339

UNIPROT ID: Q8WY36 (Gene Accession - BC131718)

Background: Transcription factor that is necessary for cell cycle progression from G1 to S phase.

Immunogen: Fusion protein of human BBX

Applications: ELISA, IHC

Recommended Dilutions: IHC: 30-150; ELISA: 5000-10000

Host Species: Rabbit

Clonality: Rabbit Polyclonal

Isotype: Immunogen-specific rabbit IgG

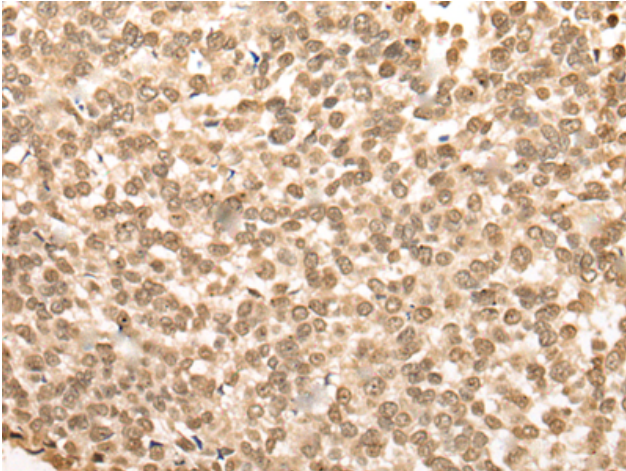
Purification: Antigen affinity purification

Species Reactivity: Human

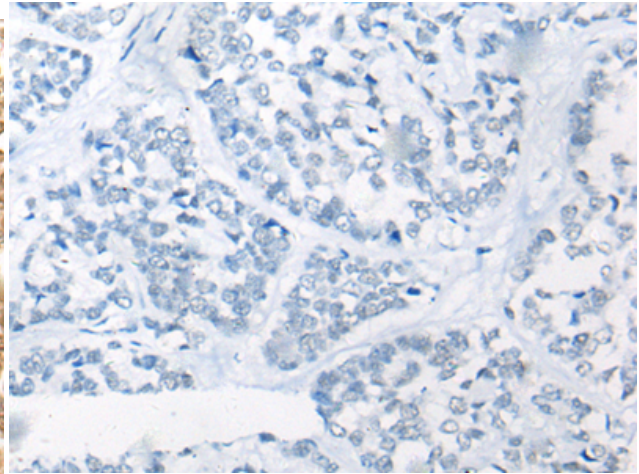
Constituents: PBS (without Mg²⁺ and Ca²⁺), pH 7.4, 150 mM NaCl, 0.05% Sodium Azide and 40% glycerol

Research Areas: Epigenetics and Nuclear Signaling

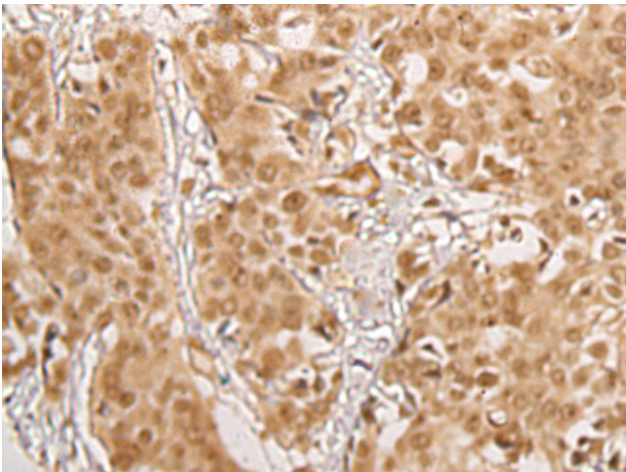
Storage & Shipping: Store at -20°C. Avoid repeated freezing and thawing



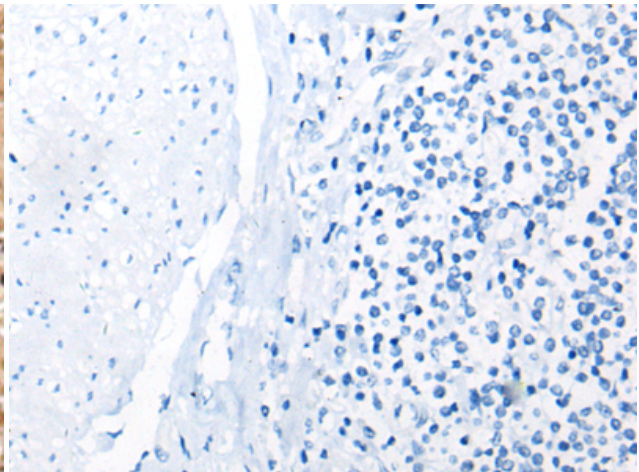
Immunohistochemistry analysis of paraffin embedded Human esophagus cancer tissue using 218354(BBX Antibody) at a dilution of 1/35(Nucleus).



In comparison with the IHC on the left, the same paraffin-embedded Human esophagus cancer tissue is first treated with the fusion protein and then with 218354(Anti-BBX Antibody) at dilution 1/35.



The image on the left is immunohistochemistry of paraffin-embedded Human prostate cancer tissue using 218354(Anti-BBX Antibody) at a dilution of 1/35.



In comparison with the IHC on the left, the same paraffin-embedded Human prostate cancer tissue is first treated with fusion protein and then with D224238(Anti-BBX Antibody) at dilution 1/35.