

## BCAS2 RABBIT PAB

**Cat.#:** S217201

**Product Name:** Anti-BCAS2 Rabbit Polyclonal Antibody

**Synonyms:** DAM1; SPF27; Snt309

**UNIPROT ID:** O75934 (Gene Accession - BC005285 )

**Background:** BCAS2 (breast carcinoma amplified sequence 2), also designated DAM1 (DNA amplified in mammary carcinoma 1 protein) or spliceosome-associated SPF 27, is a ubiquitously expressed nuclear protein that was originally identified as being overexpressed in various breast cancer cell lines. BCAS2 is now known to be a component of the spliceosome, participating in the removal of introns from mRNA precursors. BCAS2 specifically interacts (in a ligand-independent manner) with TR $\beta$  (thyroid hormone receptor beta), ER $\alpha$  (estrogen receptor alpha), ER $\beta$ , PR (progesterone receptor), and PPAR $\gamma$  (Peroxisome proliferator-activated receptor gamma). BCAS2 functions as an ER coactivator and is capable of enhancing ER-mediated transcription. This suggests that BCAS2 is involved in the development of breast cancer.

**Immunogen:** Fusion protein of human BCAS2

**Applications:** ELISA, WB, IHC

**Recommended Dilutions:** IHC: 50-200;WB: 200-1000;ELISA: 1000-5000

**Host Species:** Rabbit

**Clonality:** Rabbit Polyclonal

**Isotype:** Immunogen-specific rabbit IgG

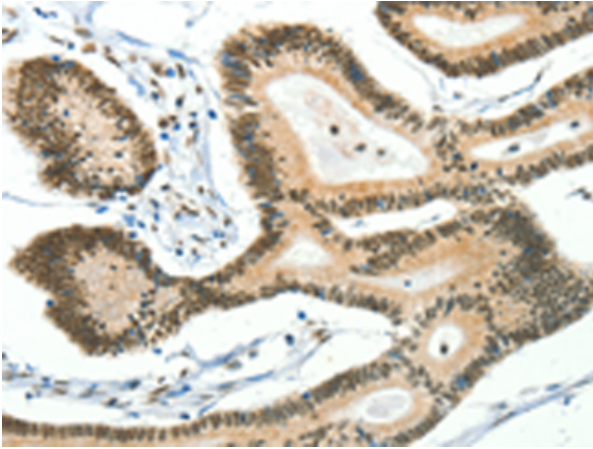
**Purification:** Antigen affinity purification

**Species Reactivity:** Human, Mouse

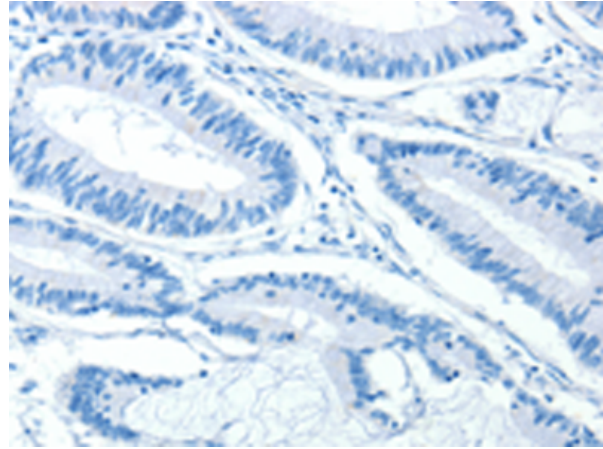
**Constituents:** PBS (without Mg<sup>2+</sup> and Ca<sup>2+</sup>), pH 7.4, 150 mM NaCl, 0.05% Sodium Azide and 40% glycerol

**Research Areas:** Epigenetics and Nuclear Signaling

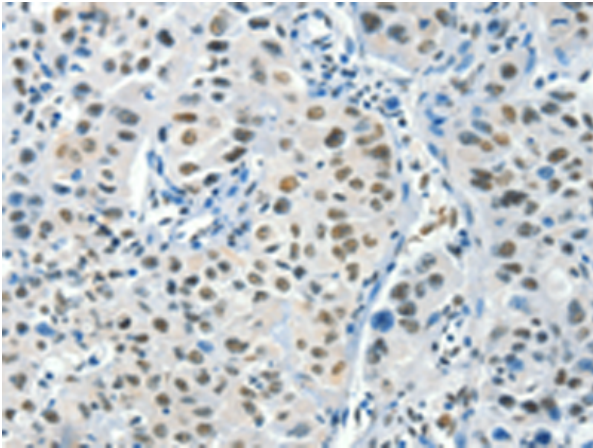
**Storage & Shipping:** Store at -20°C. Avoid repeated freezing and thawing



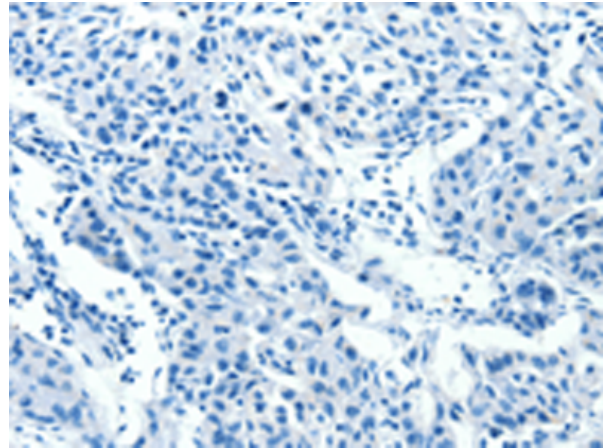
Immunohistochemistry analysis of paraffin embedded Human colon cancer tissue using 217201(BCAS2 Antibody) at a dilution of 1/50(Nucleus).



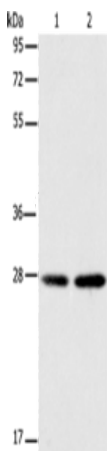
In comparison with the IHC on the left, the same paraffin-embedded Human colon cancer tissue is first treated with the fusion protein and then with 217201(Anti-BCAS2 Antibody) at dilution 1/50.



The image on the left is immunohistochemistry of paraffin-embedded Human lung cancer tissue using 217201(Anti-BCAS2 Antibody) at a dilution of 1/50.



In comparison with the IHC on the left, the same paraffin-embedded Human lung cancer tissue is first treated with fusion protein and then with D221974(Anti-BCAS2 Antibody) at dilution 1/50.



Gel: 12%SDS-PAGE, Lysate: 40 µg;  
Lane 1-2: A172 cells, 231 cells;  
Primary antibody: 217201(BCAS2 Antibody) at dilution 1/250;  
Secondary antibody: Goat anti rabbit IgG at 1/8000 dilution;  
Exposure time: 20 seconds



# Product Description

Pioneering GTPase and Oncogene Product Development since 2010

---