

BCAS4 RABBIT PAB

Cat.#: S220400

Product Name: Anti-BCAS4 Rabbit Polyclonal Antibody

Synonyms: CNOL

UNIPROT ID: Q8TDM0 (Gene Accession - NP_060313)

Background: The gene encoding BCAS4 (Breast carcinoma-amplified sequence 4), a 211 amino acid protein, is found in a region on chromosome 20 that is frequently amplified in human breast cancer. This 20q13 locus amplification is found in 12%-39% of primary breast tumors, which correlates with a 17q23 locus amplification that is found in 20% of primary breast tumors. The amplification and translocation between the BCAS4 gene and the BCAS3 gene, with a 17q23 locus, results in a fusion transcript that is overexpressed in MCF-7 cells. Also, deletion of chromosomal region 20q13.13-q13.2 and resultant deletion of BCAS4, as well as three other genes, is the cause of Okihiro syndrome, a disease characterized by ocular and upper limb anomalies. BCAS4 is normally expressed in thymus, kidney, spleen, placenta and brain. There are three isoforms of BCAS4 which are produced as a result of alternative splicing events.

Immunogen: Synthetic peptide of human BCAS4

Applications: ELISA, WB, IHC

Recommended Dilutions: IHC: 50-200;WB: 500-2000;ELISA: 5000-10000

Host Species: Rabbit

Clonality: Rabbit Polyclonal

Isotype: Immunogen-specific rabbit IgG

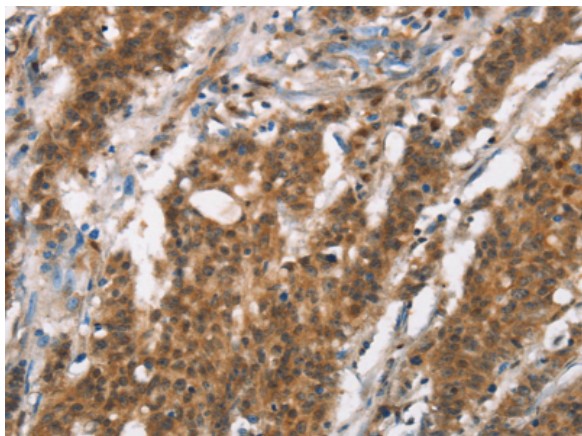
Purification: Antigen affinity purification

Species Reactivity: Human

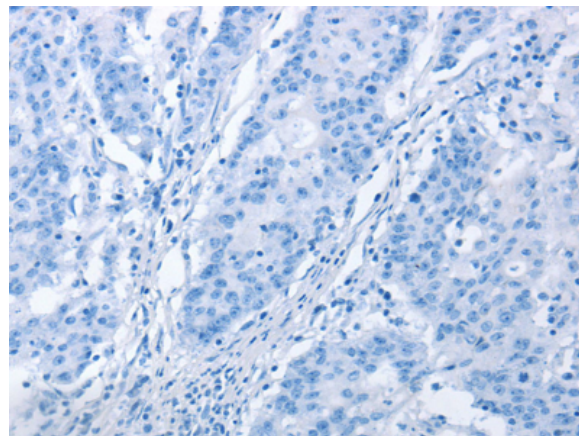
Constituents: PBS (without Mg²⁺ and Ca²⁺), pH 7.4, 150 mM NaCl, 0.05% Sodium Azide and 40% glycerol

Research Areas: Cancer

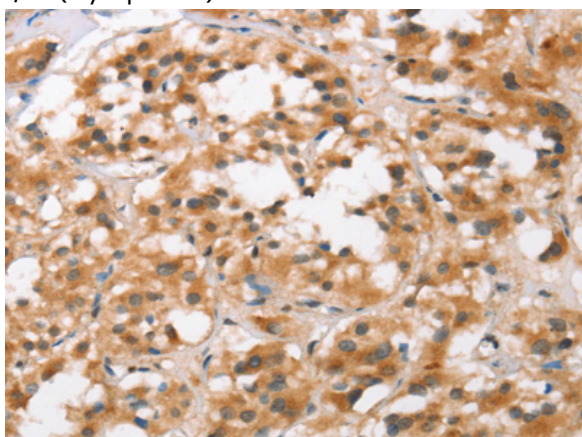
Storage & Shipping: Store at -20°C. Avoid repeated freezing and thawing



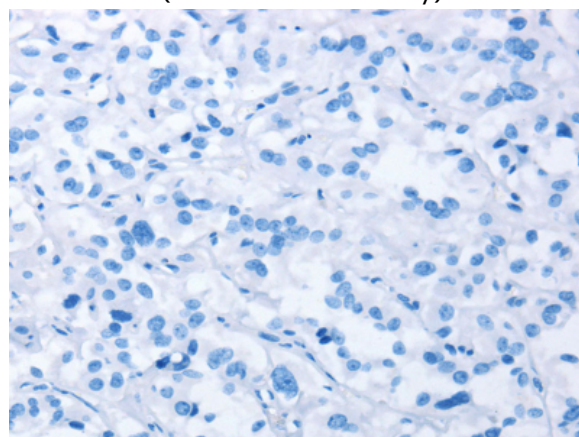
Immunohistochemistry analysis of paraffin embedded Human gastric cancer tissue using 220400(BCAS4 Antibody) at a dilution of 1/50(Cytoplasm).



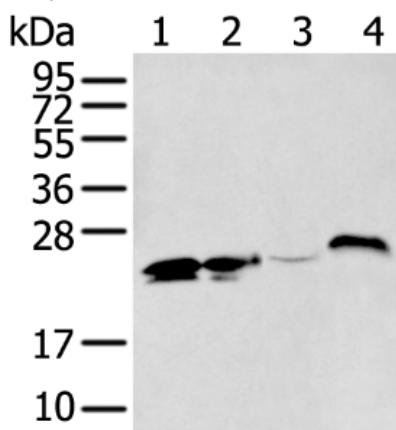
In comparison with the IHC on the left, the same paraffin-embedded Human gastric cancer tissue is first treated with the synthetic peptide and then with 220400(Anti-BCAS4 Antibody) at dilution 1/50.



The image on the left is immunohistochemistry of paraffin-embedded Human thyroid cancer tissue using 220400(Anti-BCAS4 Antibody) at a dilution of 1/50.



In comparison with the IHC on the left, the same paraffin-embedded Human thyroid cancer tissue is first treated with synthetic peptide and then with D261480(Anti-BCAS4 Antibody) at dilution 1/50.



Gel: 12%SDS-PAGE, Lysate: 40 μ g;
 Lane 1-4: K562 and Hela cell lysates, Human left kidney tissue and fetal intestines tissue lysates;
 Primary antibody: 220400(BCAS4 Antibody) at dilution 1/400;
 Secondary antibody: Goat anti rabbit IgG at 1/8000 dilution;
 Exposure time: 10 seconds



Product Description

Pioneering GTPase and Oncogene Product Development since 2010
