

## BCL2L11 RABBIT PAB

**Cat.#:** S221251

**Product Name:** Anti-BCL2L11 Rabbit Polyclonal Antibody

**Synonyms:** BAM; BIM; BOD

**UNIPROT ID:** O43521 (Gene Accession - NP\_006529 )

**Background:** The protein encoded by this gene belongs to the BCL-2 protein family. BCL-2 family members form hetero- or homodimers and act as anti- or pro-apoptotic regulators that are involved in a wide variety of cellular activities. The protein encoded by this gene contains a Bcl-2 homology domain 3 (BH3). It has been shown to interact with other members of the BCL-2 protein family and to act as an apoptotic activator. The expression of this gene can be induced by nerve growth factor (NGF), as well as by the forkhead transcription factor FKHR-L1, which suggests a role of this gene in neuronal and lymphocyte apoptosis. Transgenic studies of the mouse counterpart suggested that this gene functions as an essential initiator of apoptosis in thymocyte-negative selection. Several alternatively spliced transcript variants of this gene have been identified.

**Immunogen:** Synthetic peptide of human BCL2L11

**Applications:** ELISA, WB, IHC

**Recommended Dilutions:** IHC: 20-100;WB: 500-2000;ELISA: 5000-10000

**Host Species:** Rabbit

**Clonality:** Rabbit Polyclonal

**Isotype:** Immunogen-specific rabbit IgG

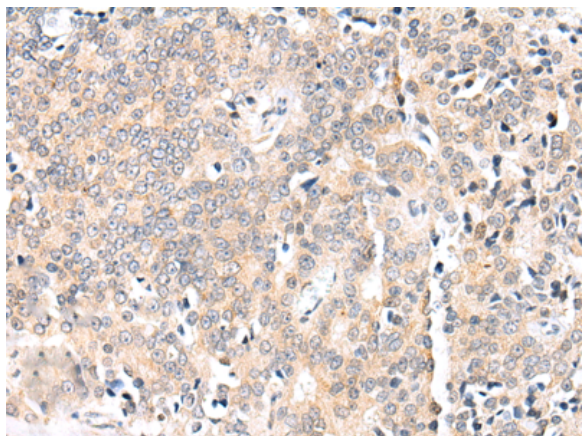
**Purification:** Antigen affinity purification

**Species Reactivity:** Human, Mouse, Rat

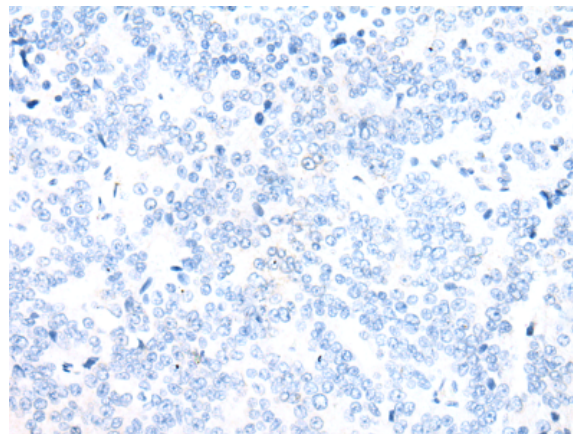
**Constituents:** PBS (without Mg<sup>2+</sup> and Ca<sup>2+</sup>), pH 7.4, 150 mM NaCl, 0.05% Sodium Azide and 40% glycerol

**Research Areas:** Signal Transduction, Cancer, Neuroscience, Immunology

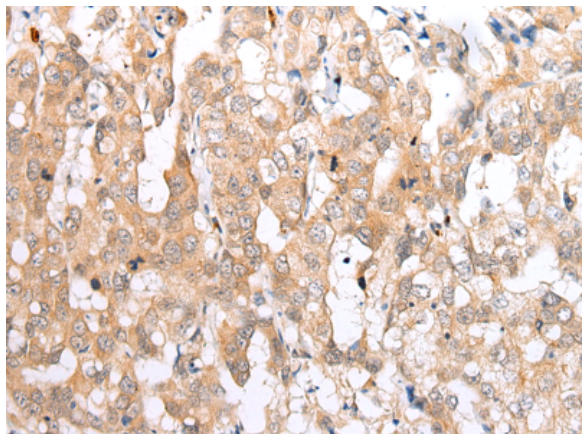
**Storage & Shipping:** Store at -20°C. Avoid repeated freezing and thawing



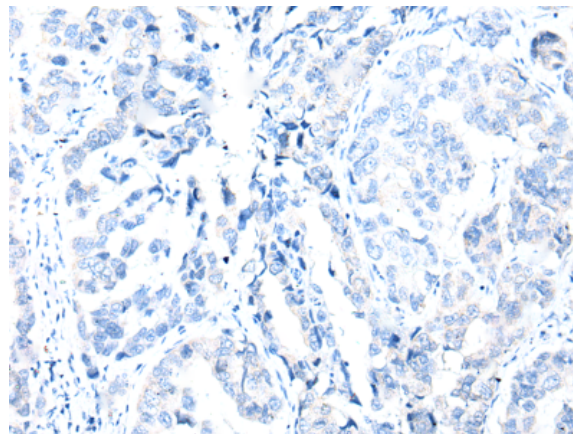
Immunohistochemistry analysis of paraffin embedded Human prostate cancer tissue using 221251(BCL2L1 Antibody) at a dilution of 1/25(Cytoplasm).



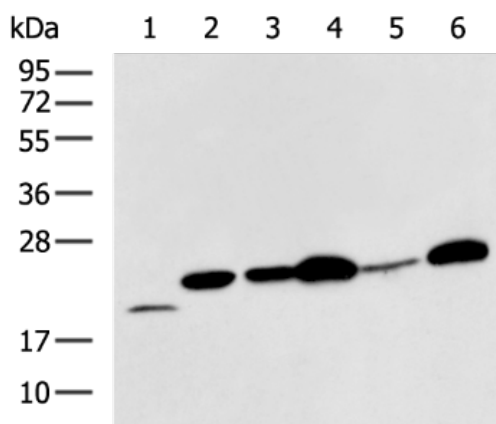
In comparison with the IHC on the left, the same paraffin-embedded Human prostate cancer tissue is first treated with the synthetic peptide and then with 221251(Anti-BCL2L1 Antibody) at dilution 1/25.



The image on the left is immunohistochemistry of paraffin-embedded Human breast cancer tissue using 221251(Anti-BCL2L1 Antibody) at a dilution of 1/25.



In comparison with the IHC on the left, the same paraffin-embedded Human breast cancer tissue is first treated with synthetic peptide and then with D262767(Anti-BCL2L1 Antibody) at dilution 1/25.



Gel: 12%SDS-PAGE, Lysate: 40 µg;  
 Lane 1-6: Rat kidney tissue, Raji, A549, HeLa, A431, K562 cell lysates;  
 Primary antibody: 221251(BCL2L1 Antibody) at dilution 1/350;  
 Secondary antibody: Goat anti rabbit IgG at 1/8000 dilution;  
 Exposure time: 3 minutes



# Product Description

Pioneering GTPase and Oncogene Product Development since 2010

---