

## BCL2L12 RABBIT PAB

**Cat.#:** S216294

**Product Name:** Anti-BCL2L12 Rabbit Polyclonal Antibody

**Synonyms:**

**UNIPROT ID:** Q9HB09 (Gene Accession - BC104005 )

**Background:** This gene encodes a member of a family of proteins containing a Bcl-2 homology domain 2 (BH2). The encoded protein is an anti-apoptotic factor that acts as an inhibitor of caspases 3 and 7 in the cytoplasm. In the nucleus, it binds to the p53 tumor suppressor protein, preventing its association with target genes. Overexpression of this gene has been detected in a number of different cancers. There is a pseudogene for this gene on chromosome 3. Alternative splicing results in multiple transcript variants

**Immunogen:** Fusion protein of human BCL2L12

**Applications:** ELISA, IHC

**Recommended Dilutions:** IHC: 25-100; ELISA: 1000-2000

**Host Species:** Rabbit

**Clonality:** Rabbit Polyclonal

**Isotype:** Immunogen-specific rabbit IgG

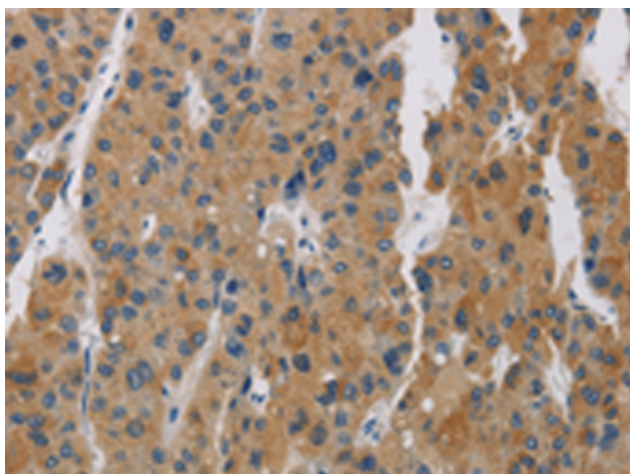
**Purification:** Antigen affinity purification

**Species Reactivity:** Human

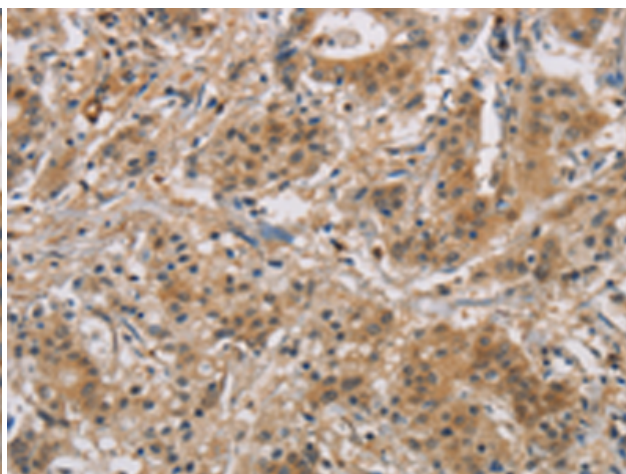
**Constituents:** PBS (without Mg<sup>2+</sup> and Ca<sup>2+</sup>), pH 7.4, 150 mM NaCl, 0.05% Sodium Azide and 40% glycerol

**Research Areas:** Cancer

**Storage & Shipping:** Store at -20°C. Avoid repeated freezing and thawing



Immunohistochemistry analysis of paraffin-embedded Human liver cancer tissue using 216294(BCL2L12 Antibody) at a dilution of 1/20(Cytoplasm).



Immunohistochemistry analysis of paraffin-embedded Human gastric cancer tissue using 216294(Anti-BCL2L12 Antibody) at a dilution of 1/20.