

BCL6B RABBIT PAB

Cat.#: S218356

Product Name: Anti-BCL6B Rabbit Polyclonal Antibody

Synonyms: BAZF; ZNF62; ZBTB28

UNIPROT ID: Q8N143 (Gene Accession - BC059404)

Background: Bcl-6, a transcriptional repressor, binds Stat recognition-like DNA elements and influences germinal center development and cell differentiation. Additionally, Bcl-6 negatively regulates NF κ B expression, thereby inhibiting NF κ B-mediated cellular functions. Bcl-6b (B-cell CLL/lymphoma 6, member B), also known as ZNF62, BAZF or ZBTB28, is a 480 amino acid nuclear protein that contains one BTB (POZ) domain and five C2H2-type zinc fingers. Expressed ubiquitously with highest expression in placenta and heart, Bcl-6b associates with Bcl-6 and functions as a sequence-specific transcriptional repressor that is thought to be necessary for early B-cell development. The gene encoding Bcl-6b maps to human chromosome 17, which comprises over 2.5% of the human genome and encodes over 1,200 genes.

Immunogen: Fusion protein of human BCL6B

Applications: ELISA, WB, IHC

Recommended Dilutions: IHC: 25-100;WB: 200-1000;ELISA: 5000-10000

Host Species: Rabbit

Clonality: Rabbit Polyclonal

Isotype: Immunogen-specific rabbit IgG

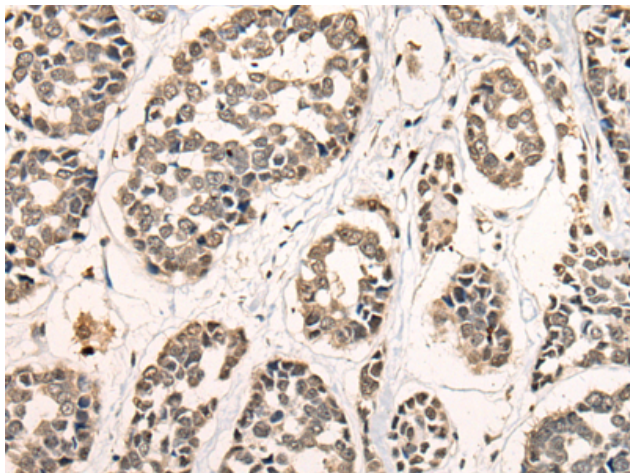
Purification: Antigen affinity purification

Species Reactivity: Human, Mouse

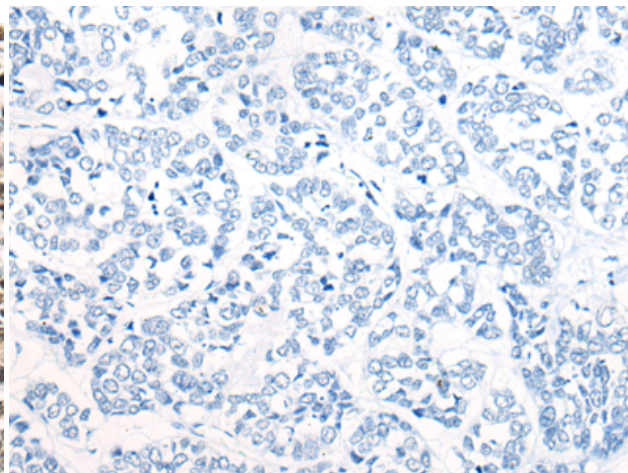
Constituents: PBS (without Mg²⁺ and Ca²⁺), pH 7.4, 150 mM NaCl, 0.05% Sodium Azide and 40% glycerol

Research Areas: Epigenetics and Nuclear Signaling, Stem Cells

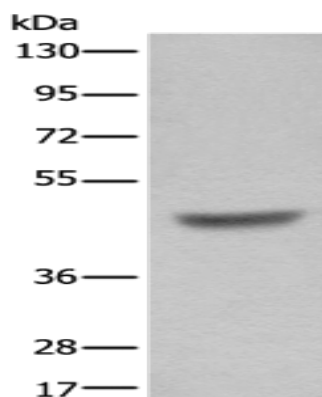
Storage & Shipping: Store at -20°C. Avoid repeated freezing and thawing



Immunohistochemistry analysis of paraffin embedded Human esophagus cancer tissue using 218356(BCL6B Antibody) at a dilution of 1/30(Nucleus).



In comparison with the IHC on the left, the same paraffin-embedded Human esophagus cancer tissue is first treated with the fusion protein and then with 218356(Anti-BCL6B Antibody) at dilution 1/30.



Gel: 8%SDS-PAGE, Lysate: 40 μ g;
Lane: A549 cell lysate;
Primary antibody: 218356(BCL6B Antibody) at dilution 1/200;
Secondary antibody: Goat anti rabbit IgG at 1/8000 dilution;
Exposure time: 1 second