

BDH2 RABBIT PAB

Cat.#: S218358

Product Name: Anti-BDH2 Rabbit Polyclonal Antibody

Synonyms: DHRS6; EFA6R; SDR15C1; UCPA-OR; UNQ6308; PRO20933

UNIPROT ID: Q9BUT1 (Gene Accession - BC001953)

Background: Dehydrogenase that mediates the formation of 2,5-dihydroxybenzoic acid (2,5-DHBA), a siderophore that shares structural similarities with bacterial enterobactin and associates with LCN2, thereby playing a key role in iron homeostasis and transport. Also acts as a 3-hydroxybutyrate dehydrogenase (By similarity).

Immunogen: Full length fusion protein

Applications: ELISA, WB, IHC

Recommended Dilutions: IHC: 50-300;WB: 500-2000;ELISA: 5000-10000

Host Species: Rabbit

Clonality: Rabbit Polyclonal

Isotype: Immunogen-specific rabbit IgG

Purification: Antigen affinity purification

Species Reactivity: Human, Mouse, Rat

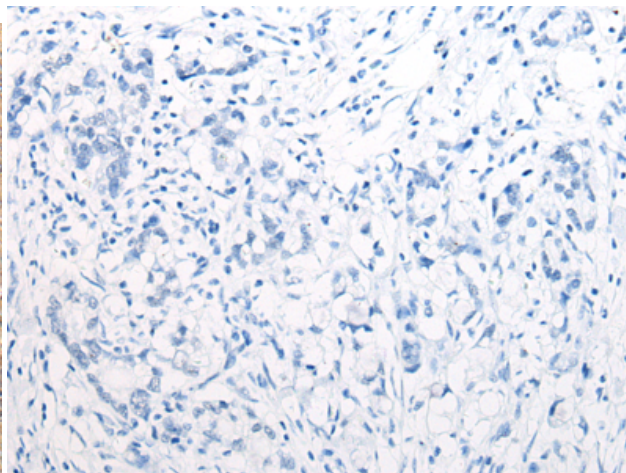
Constituents: PBS (without Mg²⁺ and Ca²⁺), pH 7.4, 150 mM NaCl, 0.05% Sodium Azide and 40% glycerol

Research Areas: Metabolism, Cell Biology, Cardiovascular

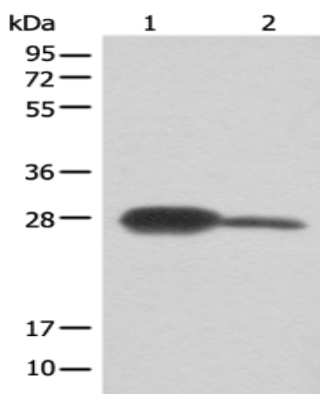
Storage & Shipping: Store at -20°C. Avoid repeated freezing and thawing



Immunohistochemistry analysis of paraffin embedded Human liver cancer tissue using 218358(BDH2 Antibody) at a dilution of 1/65(Cytoplasm).



In comparison with the IHC on the left, the same paraffin-embedded Human liver cancer tissue is first treated with the fusion protein and then with 218358(Anti-BDH2 Antibody) at dilution 1/65.



Gel: 12%SDS-PAGE, Lysate: 40 µg;
 Lane 1-2: Mouse kidney tissue and A172 cell lysates;
 Primary antibody: 218358(BDH2 Antibody) at dilution 1/600;
 Secondary antibody: Goat anti rabbit IgG at 1/8000 dilution;
 Exposure time: 15 seconds