

## BDKRB2 RABBIT MAB

**Cat.#:** N263120

**Product Name:** Anti-BDKRB2 Rabbit Monoclonal Antibody

**Synonyms:** B2BKR; B2BRA; B2R; BDKRB2; BK2 receptor; BK2R; BKR2; BR B2; BRB2; Kinin B2

**UNIPROT ID:** P30411

**Background:** Receptor for bradykinin. It is associated with G proteins that activate a phosphatidylinositol-calcium second messenger system.

**Immunogen:** A synthetic peptide of human BDKRB2

**Applications:** WB,IP

**Recommended Dilutions:** WB: 1/500-1/1000 IP: 1/20

**Host Species:** Rabbit

**Clonality:** Rabbit Monoclonal

**Clone ID:** R07-013

**MW:** Calculated MW: 44 kDa; Observed MW: 80-100 kDa

**Isotype:** IgG

**Purification:** Affinity Purified

**Species Reactivity:** Human

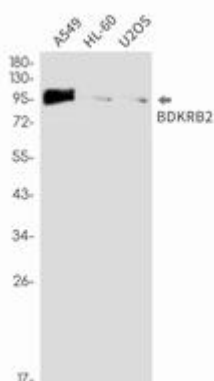
**Conjugation:** Unconjugated

**Modification:** Unmodified

**Constituents:** PBS (without Mg<sup>2+</sup> and Ca<sup>2+</sup>), pH 7.3 containing 50% glycerol, 0.5% BSA and 0.02% sodium azide

**Research Areas:** Cardiovascular

**Storage & Shipping:** Store at -20°C. Avoid repeated freezing and thawing



Western blot analysis of BDKRB2 in A549, HL-60, U2OS lysates using BDKRB2 antibody.



# Product Description

Pioneering GTPase and Oncogene Product Development since 2010

---