

BECLIN 1 RABBIT MAB

Cat.#: N261689

Product Name: Anti-Beclin 1 Rabbit Monoclonal Antibody

Synonyms: BECN1

UNIPROT ID: Q14457

Background: Plays a central role in autophagy. Required for the abscission step in cytokinesis. May play a role in antiviral host defense. Protects against infection by a neurovirulent strain of Sindbis virus.

Immunogen: Recombinant protein of human Beclin 1

Applications: WB,IP

Recommended Dilutions: WB: 1/500-1/1000 IP: 1/20

Host Species: Rabbit

Clonality: Rabbit Monoclonal

Clone ID: R02-8D5

MW: Calculated MW: 52 kDa; Observed MW: 60 kDa

Isotype: IgG

Purification: Affinity Purified

Species Reactivity: Human,Mouse,Rat

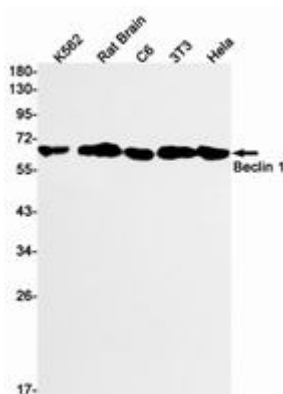
Conjugation: Unconjugated

Modification: Unmodified

Constituents: PBS (without Mg²⁺ and Ca²⁺), pH 7.3 containing 50% glycerol, 0.5% BSA and 0.02% sodium azide

Research Areas: Autophagy, Autophagosome

Storage & Shipping: Store at -20°C. Avoid repeated freezing and thawing



Western blot analysis of Beclin 1 in K562, rat Brain, C6, 3T3, HeLa lysates using Beclin 1 antibody.



Product Description

Pioneering GTPase and Oncogene Product Development since 2010
