

BESTROPHIN 2 RABBIT PAB

Cat.#: N225528

Product Name: Anti-Bestrophin 2 Rabbit pAb

Synonyms: BEST 2 antibody; FLJ20132 antibody; Vitelliform macular dystrophy 2 homolog antibody

UNIPROT ID: Q8NFUI

Background: Forms calcium-sensitive chloride channels.

Immunogen: Synthetic Peptide of BEST2

Applications: WB,IHC-P

Recommended Dilutions: WB: 1/500-1/1000 IHC: 1/50-1/100

Host Species: Rabbit

Clonality: Rabbit Polyclonal

Clone ID: -

MW: Calculated MW: 57 kDa; Observed MW: 50 kDa

Isotype: IgG

Purification: Affinity Purified

Species Reactivity: Mouse,Rat

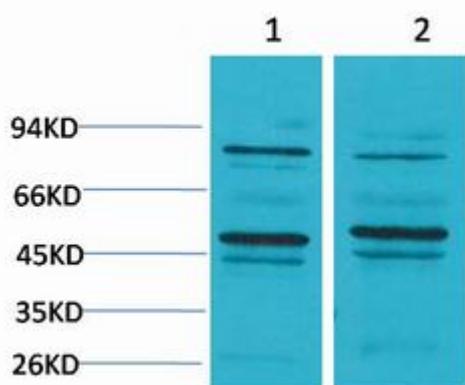
Conjugation: Unconjugated

Modification: Unmodified

Constituents: PBS (without Mg²⁺ and Ca²⁺), pH 7.3 containing 50% glycerol, 0.5% BSA and 0.02% sodium azide

Research Areas: Signal Transduction

Storage & Shipping: Store at -20°C. Avoid repeated freezing and thawing



Western blot analysis of Bestrophin 2 in mouse Brain, rat Brain lysates using Bestrophin2 antibody.



Product Description

Pioneering GTPase and Oncogene Product Development since 2010
