

## BETA 2 MICROGLOBULIN RABBIT MAB

**Cat.#:** N261918

**Product Name:** Anti-beta 2 Microglobulin Rabbit Monoclonal Antibody

**Synonyms:** B2MG; Beta 2 microglobin; Beta 2 microglobulin; Beta-2-microglobulin form pl 5.3; CDABP0092; Hdcma22p

**UNIPROT ID:** P61769

**Background:** Major histocompatibility complex (MHC) class 1 molecules bind to antigens for presentation on the surface of cells. The proteasome is responsible for producing these antigens from the components of foreign pathogens. MHC class 1 molecules consist of an a heavy chain that contains three subdomains ( $\alpha 1$ ,  $\alpha 2$ ,  $\alpha 3$ ), and a non-covalent associating light chain, known as  $\beta$ -2-Microglobulin.

**Immunogen:** A synthetic peptide of human beta 2 Microglobulin

**Applications:** WB,IP

**Recommended Dilutions:** WB: 1/500-1/1000 IP: 1/20

**Host Species:** Rabbit

**Clonality:** Rabbit Monoclonal

**Clone ID:** R07-8B6

**MW:** Calculated MW: 14 kDa; Observed MW: 14 kDa

**Isotype:** IgG

**Purification:** Affinity Purified

**Species Reactivity:** Human,Mouse,Rat

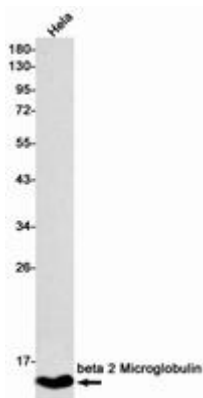
**Conjugation:** Unconjugated

**Modification:** Unmodified

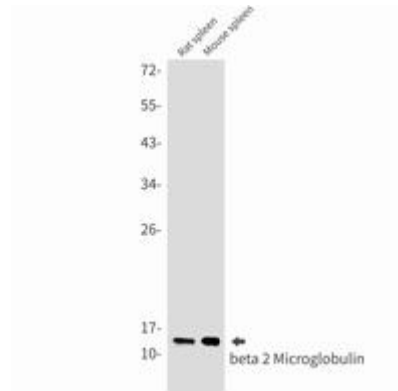
**Constituents:** PBS (without  $Mg^{2+}$  and  $Ca^{2+}$ ), pH 7.3 containing 50% glycerol, 0.5% BSA and 0.02% sodium azide

**Research Areas:** Cardiovascular

**Storage & Shipping:** Store at  $-20^{\circ}C$ . Avoid repeated freezing and thawing



Western blot analysis of beta 2 Microglobulin in Hela lysates using beta 2 Microglobulin antibody.



Western blot analysis of beta 2 Microglobulin in rat spleen, mouse spleen lysates using beta 2 Microglobulin antibody.