

BETA CATENIN RABBIT MAB

Cat.#: N261920

Product Name: Anti-beta Catenin Rabbit Monoclonal Antibody

Synonyms: CTNNB1; CTNNB; OK/SW-cl.35; Catenin beta-1; Beta-catenin

UNIPROT ID: P35222

Background: Beta-catenin is an adherens junction protein. Adherens junctions (AJs; also called the zonula adherens) are critical for the establishment and maintenance of epithelial layers, such as those lining organ surfaces. AJs mediate adhesion between cells, communicate a signal that neighboring cells are present, and anchor the actin cytoskeleton. In serving these roles, AJs regulate normal cell growth and behavior.

Immunogen: A synthetic peptide of human beta Catenin

Applications: WB,ICC/IF

Recommended Dilutions: WB: 1/500-1/1000 IF: 1/50-1/200

Host Species: Rabbit

Clonality: Rabbit Monoclonal

Clone ID: R07-9D5

MW: Calculated MW: 85 kDa; Observed MW: 85 kDa

Isotype: IgG

Purification: Affinity Purified

Species Reactivity: Human,Mouse,Rat

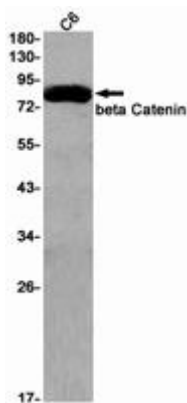
Conjugation: Unconjugated

Modification: Unmodified

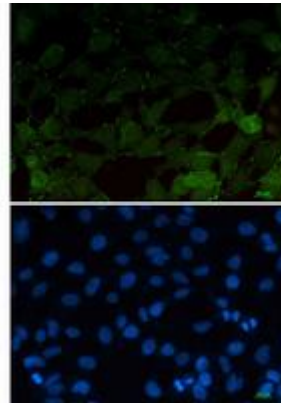
Constituents: PBS (without Mg²⁺ and Ca²⁺), pH 7.3 containing 50% glycerol, 0.5% BSA and 0.02% sodium azide

Research Areas: Signal Transduction

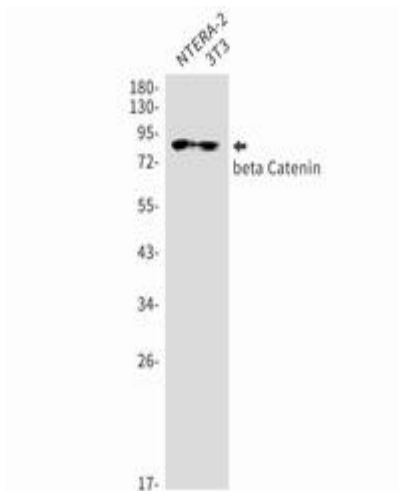
Storage & Shipping: Store at -20°C. Avoid repeated freezing and thawing



Western blot analysis of beta Catenin in C6 lysates using beta Catenin antibody



Immunocytochemistry analysis of beta Catenin (green) in 293T using beta Catenin antibody, and DAPI (blue).



Western blot analysis of beta Catenin in NTERA-2, 3T3 lysates using beta Catenin antibody.