

BETA CATENIN RABBIT MAB

Cat.#: N261678

Product Name: Anti-beta Catenin Rabbit Monoclonal Antibody

Synonyms: CTNNB1; CTNNB; OK/SW-cl.35; Catenin beta-1; Beta-catenin

UNIPROT ID: P35222

Background: Beta-catenin is an adherens junction protein. Adherens junctions (AJs; also called the zonula adherens) are critical for the establishment and maintenance of epithelial layers, such as those lining organ surfaces. AJs mediate adhesion between cells, communicate a signal that neighboring cells are present, and anchor the actin cytoskeleton. In serving these roles, AJs regulate normal cell growth and behavior.

Immunogen: A synthetic peptide of human beta Catenin

Applications: WB,IHC-P,IP

Recommended Dilutions: WB: 1/500-1/1000 IHC: 1/50-1/100 IP: 1/20

Host Species: Rabbit

Clonality: Rabbit Monoclonal

Clone ID: R06-1E2

MW: Calculated MW: 85 kDa; Observed MW: 85 kDa

Isotype: IgG

Purification: Affinity Purified

Species Reactivity: Human,Mouse,Rat,Hamster

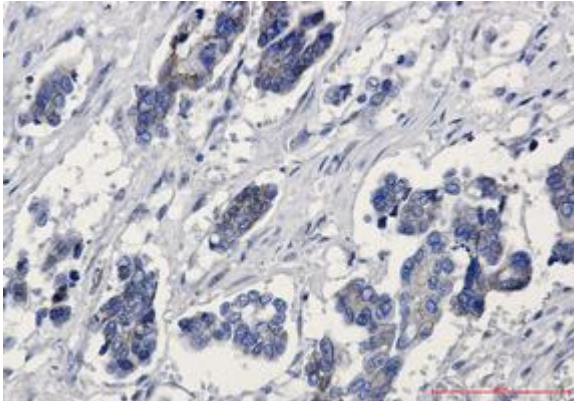
Conjugation: Unconjugated

Modification: Unmodified

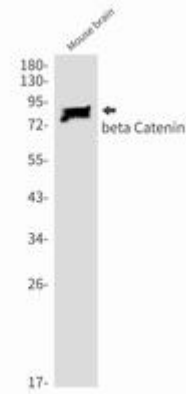
Constituents: PBS (without Mg²⁺ and Ca²⁺), pH 7.3 containing 50% glycerol, 0.5% BSA and 0.02% sodium azide

Research Areas: Hypoxia Signal Transduction Hypoxia-Inhibition

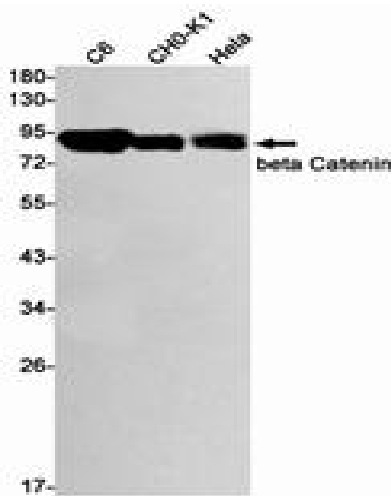
Storage & Shipping: Store at -20°C. Avoid repeated freezing and thawing



Immunohistochemistry analysis of paraffin-embedded Human Cholangiocarcinoma using beta Catenin antibody. High-pressure and temperature Sodium Citrate pH 6.0 was used for antigen retrieval.



Western blot analysis of beta Catenin in mouse brain lysates using beta Catenin antibody.



Western blot analysis of beta Catenin in C6, CHO-K1, HeLa lysates using beta Catenin antibody.