

BETA I TUBULIN (1H10) MOUSE MAB

Cat.#: N261268

Product Name: Anti-beta I Tubulin (1H10) Mouse Monoclonal Antibody

Synonyms: beta I tubulin; TBB1; TUBB1; Tubulin beta 1; Class VI beta tubulin

UNIPROT ID: Q9H4B7

Background: Tubulin is the major constituent of microtubules. It binds two moles of GTP, one at an exchangeable site on the beta chain and one at a non-exchangeable site on the alpha chain (By similarity).

Immunogen: Synthetic Peptide of β I tubulin

Applications: WB,IHC-F,IHC-P,ICC/IF

Recommended Dilutions: WB: 1/500-1/1000 IHC: 1/50-1/100 IF: 1/50-1/200

Host Species: Mouse

Clonality: Mouse Monoclonal

Clone ID: 1H10-8B8-3D2

MW: Calculated MW: 50 kDa; Observed MW: 50 kDa

Isotype: IgG1

Purification: Affinity Purified

Species Reactivity: Human,Rat,Mouse

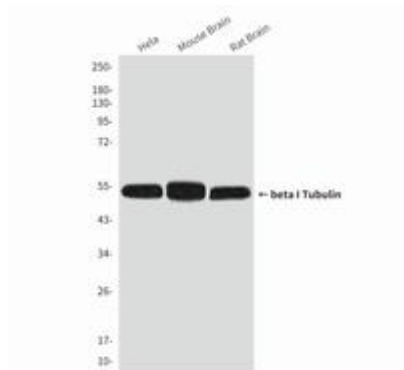
Conjugation: Unconjugated

Modification: Unmodified

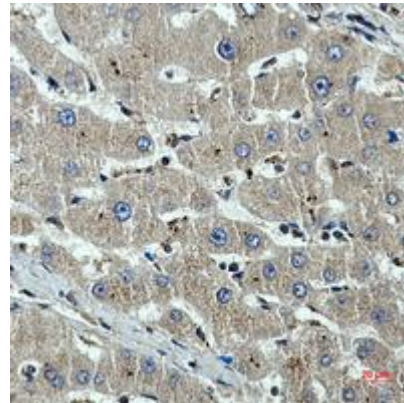
Constituents: PBS (without Mg²⁺ and Ca²⁺), pH 7.3 containing 50% glycerol, 0.5% BSA and 0.02% sodium azide

Research Areas: Signal Transduction

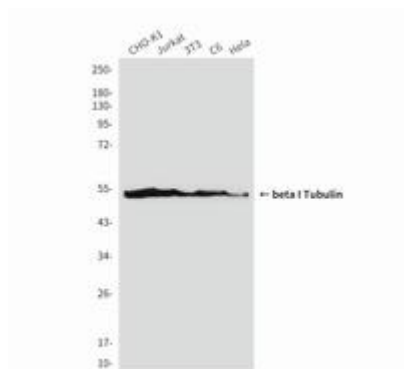
Storage & Shipping: Store at -20°C. Avoid repeated freezing and thawing



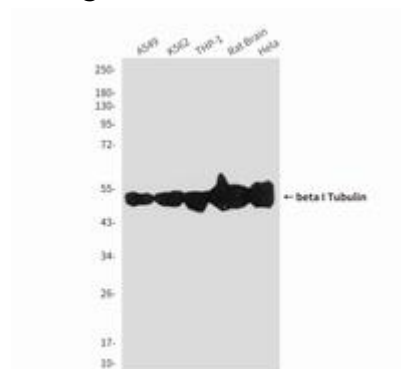
Western blot analysis of beta I Tubulin (1H10) in HeLa, mouse Brain Tissue, rat Brain Tissue lysates using beta I Tubulin (1H10) antibody



Immunohistochemistry analysis of paraffin-embedded beta I Tubulin in Human liver cancer using beta I Tubulin (1H10) antibody. High-pressure and temperature Sodium Citrate pH 6.0 was used for antigen retrieval.



Western blot analysis of beta I Tubulin (1H10) in CHO-K1, Jurkat, 3T3, C6 and HeLa lysates using beta I Tubulin (1H10) antibody



Western blot analysis of beta I Tubulin (1H10) in A549, K562, THP-1, rat Brain, HeLa lysates using beta I Tubulin (1H10) antibody.