

## BETA IV TUBULIN RABBIT MAB

**Cat.#:** N261923

**Product Name:** Anti-beta IV Tubulin Rabbit Monoclonal Antibody

**Synonyms:** DYT4; TUBB4; beta-5

**UNIPROT ID:** P04350

**Background:** Tubulin is the major constituent of microtubules. It binds two moles of GTP, one at an exchangeable site on the beta chain and one at a non-exchangeable site on the alpha chain.

**Immunogen:** A synthetic peptide of human beta IV Tubulin

**Applications:** WB,IHC-F,IHC-P,ICC/IF

**Recommended Dilutions:** WB: 1/500-1/1000 IHC: 1/50-1/100 IF: 1/50-1/200

**Host Species:** Rabbit

**Clonality:** Rabbit Monoclonal

**Clone ID:** R06-6A5

**MW:** Calculated MW: 50 kDa; Observed MW: 50 kDa

**Isotype:** IgG

**Purification:** Affinity Purified

**Species Reactivity:** Human,Mouse,Rat

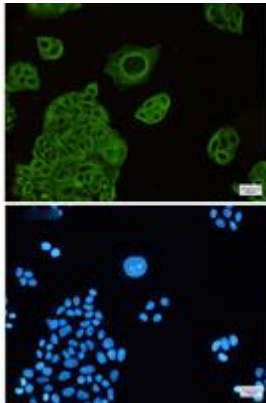
**Conjugation:** Unconjugated

**Modification:** Unmodified

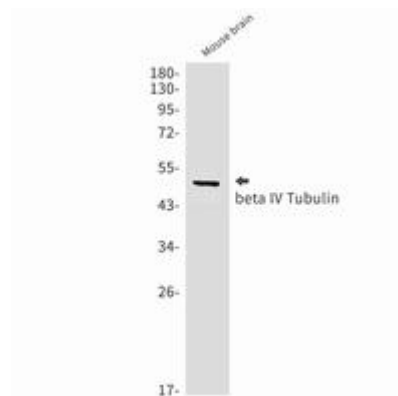
**Constituents:** PBS (without Mg<sup>2+</sup> and Ca<sup>2+</sup>), pH 7.3 containing 50% glycerol, 0.5% BSA and 0.02% sodium azide

**Research Areas:** Tags & Cell Markers

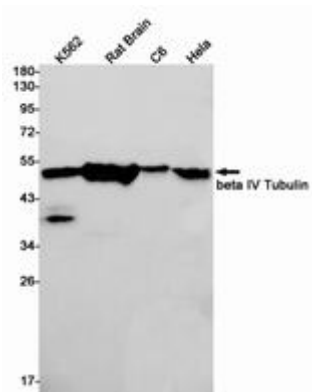
**Storage & Shipping:** Store at -20°C. Avoid repeated freezing and thawing



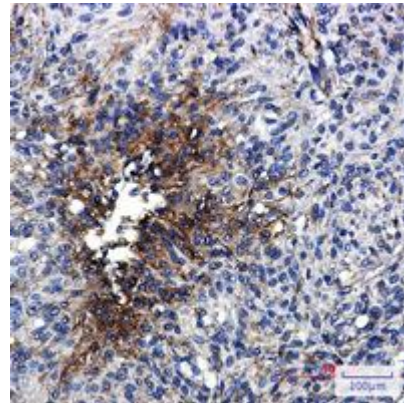
Immunocytochemistry analysis of beta IV Tubulin (green) in Hela using beta IV Tubulin antibody, and DAPI (blue)



Western blot analysis of beta IV Tubulin in mouse brain lysates using beta IV Tubulin antibody.



Western blot analysis of beta IV Tubulin in K562, rat Brain, C6, Hela lysates using beta IV Tubulin antibody.



Immunohistochemistry analysis of paraffin-embedded Human brain using beta IV Tubulin antibody. High-pressure and temperature Sodium Citrate pH 6.0 was used for antigen retrieval.