

## BHLHA15 RABBIT PAB

**Cat.#:** S221613

**Product Name:** Anti-BHLHA15 Rabbit Polyclonal Antibody

**Synonyms:** MIST1; BHLHB8

**UNIPROT ID:** Q7RTS1 (Gene Accession - NP\_803238 )

**Background:** MIST1 (muscle, intestine and stomach expression 1), also known as BHLHB8 (basic helix-loop-helix domain containing, class B, 8), is a 189 amino acid nuclear protein expressed in liver, brain, skeletal muscle and spleen. MIST1 contains a basic helix-loop-helix (bHLH) domain and belongs to the bHLH family of transcription factors. Members of this family bind to the E-box motifs present in the promoter or enhancer regions of a variety of developmentally regulated genes and function as either transcriptional activators or transcriptional repressors. MIST1 is capable of binding to E-box motifs as a homodimer or a heterodimer with E-proteins (E12 and E47) and is believed to play a role regulating the transcriptional activity of MyoD, a protein involved in the regulation of muscle cell development. More specifically, MIST1 functions as a repressor of MyoD activity, ensuring that myoblast populations do not differentiate. In addition, MIST1 is expressed in mammary epithelial cells and is essential for the regulation of mammary gland development.

**Immunogen:** Synthetic peptide of human BHLHA15

**Applications:** ELISA, WB, IHC

**Recommended Dilutions:** IHC: 20-100;WB: 200-1000;ELISA: 5000-10000

**Host Species:** Rabbit

**Clonality:** Rabbit Polyclonal

**Isotype:** Immunogen-specific rabbit IgG

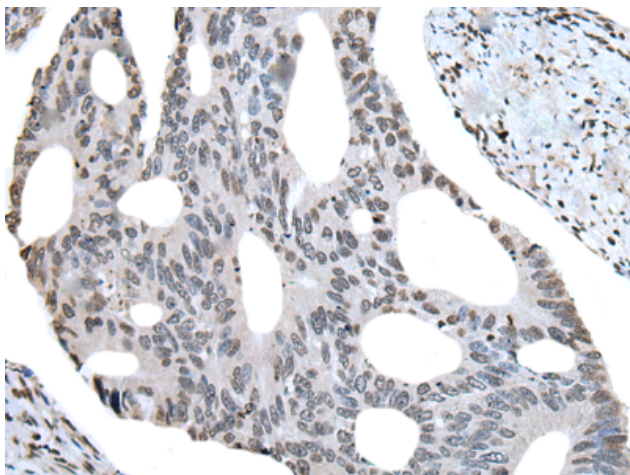
**Purification:** Antigen affinity purification

**Species Reactivity:** Human, Mouse, Rat

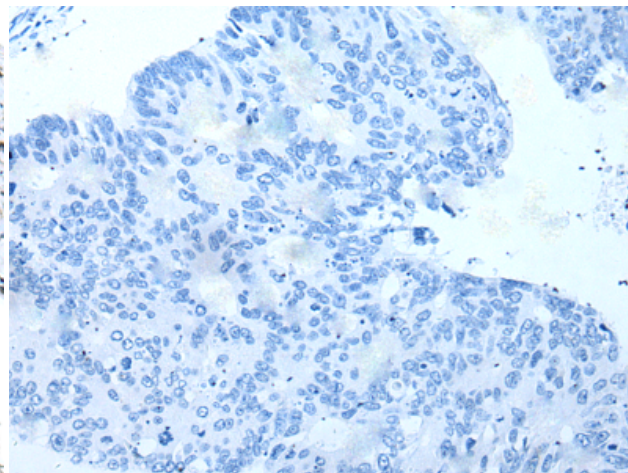
**Constituents:** PBS (without Mg<sup>2+</sup> and Ca<sup>2+</sup>), pH 7.4, 150 mM NaCl, 0.05% Sodium Azide and 40% glycerol

**Research Areas:** Epigenetics and Nuclear Signaling

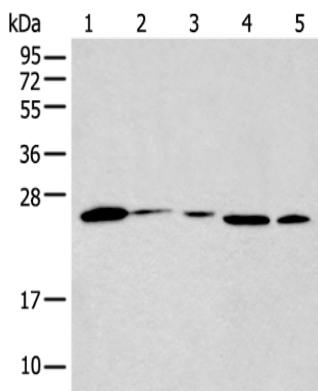
**Storage & Shipping:** Store at -20°C. Avoid repeated freezing and thawing



Immunohistochemistry analysis of paraffin embedded Human colorectal cancer tissue using 221613 (BHLHA15 Antibody) at a dilution of 1/25 (Nucleus).



In comparison with the IHC on the left, the same paraffin-embedded Human colorectal cancer tissue is first treated with the synthetic peptide and then with 221613 (Anti-BHLHA15 Antibody) at dilution 1/25.



Gel: 12% SDS-PAGE, Lysate: 40 µg;

Lane 1-5: Human muscle tissue, Human spleen tissue, Mouse Pancreas tissue, Human pancreas tissue and Mouse liver tissue lysates;

Primary antibody: 221613 (BHLHA15 Antibody) at dilution 1/250;

Secondary antibody: Goat anti rabbit IgG at 1/8000 dilution;

Exposure time: 1 minute