

BICD2 RABBIT PAB

Cat.#: S221615

Product Name: Anti-BICD2 Rabbit Polyclonal Antibody

Synonyms: SMALED2; SMALED2A; SMALED2B; bA526D8.1

UNIPROT ID: Q8TD16 (Gene Accession - NP_056065)

Background: This gene is one of two human homologs of Drosophila bicaudal-D and a member of the Bicoid family. It has been implicated in dynein-mediated, minus end-directed motility along microtubules. It has also been reported to be a phosphorylation target of NIMA related kinase 8. Two alternative splice variants have been described.

Immunogen: Synthetic peptide of human BICD2

Applications: ELISA, IHC

Recommended Dilutions: IHC: 20-100; ELISA: 5000-10000

Host Species: Rabbit

Clonality: Rabbit Polyclonal

Isotype: Immunogen-specific rabbit IgG

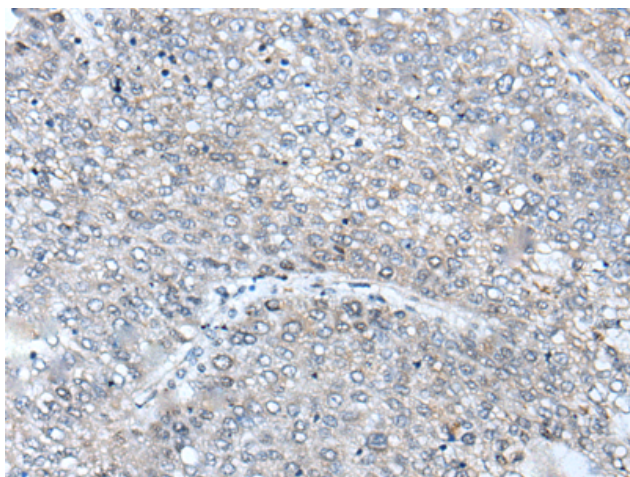
Purification: Antigen affinity purification

Species Reactivity: Human

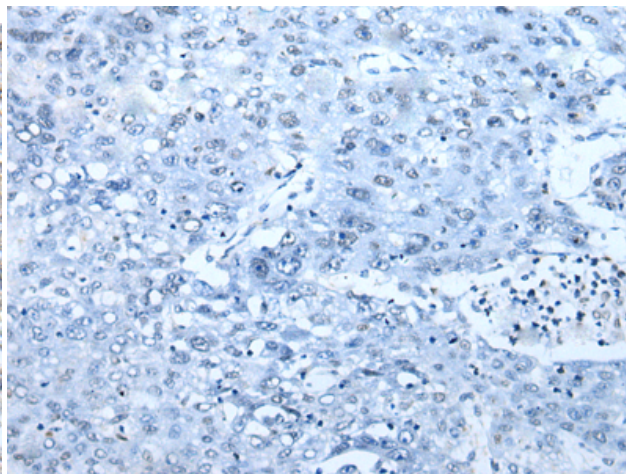
Constituents: PBS (without Mg²⁺ and Ca²⁺), pH 7.4, 150 mM NaCl, 0.05% Sodium Azide and 40% glycerol

Research Areas: Signal Transduction

Storage & Shipping: Store at -20°C. Avoid repeated freezing and thawing



Immunohistochemistry analysis of paraffin embedded Human liver cancer tissue using 221615(BICD2 Antibody) at a dilution of 1/20(Cytoplasm).



In comparison with the IHC on the left, the same paraffin-embedded Human liver cancer tissue is first treated with the synthetic peptide and then with 221615(Anti-BICD2 Antibody) at dilution 1/20.