

BLOC1S6 RABBIT PAB

Cat.#: S219223

Product Name: Anti-BLOC1S6 Rabbit Polyclonal Antibody

Synonyms: PA; HPS9; PLDN; BLOS6; PALLID

UNIPROT ID: Q9UL45 (Gene Accession - BC004819)

Background: The protein encoded by this gene may play a role in intracellular vesicle trafficking. It interacts with Syntaxin 13 which mediates intracellular membrane fusion. Mutations in this gene cause symptoms associated with Hermansky-Pudlak syndrome-9. Alternative splicing results in multiple transcript variants. A pseudogene related to this gene is located on the X chromosome.

Immunogen: Fusion protein of human BLOC1S6

Applications: ELISA, WB, IHC

Recommended Dilutions: IHC: 100-300;WB: 1000-5000;ELISA: 5000-10000

Host Species: Rabbit

Clonality: Rabbit Polyclonal

Isotype: Immunogen-specific rabbit IgG

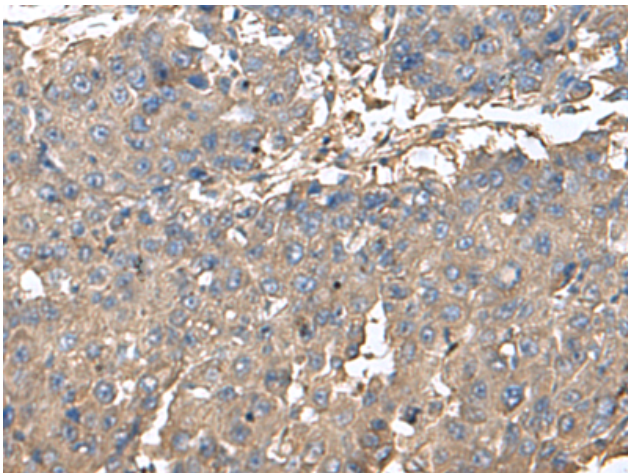
Purification: Antigen affinity purification

Species Reactivity: Human, Mouse, Rat

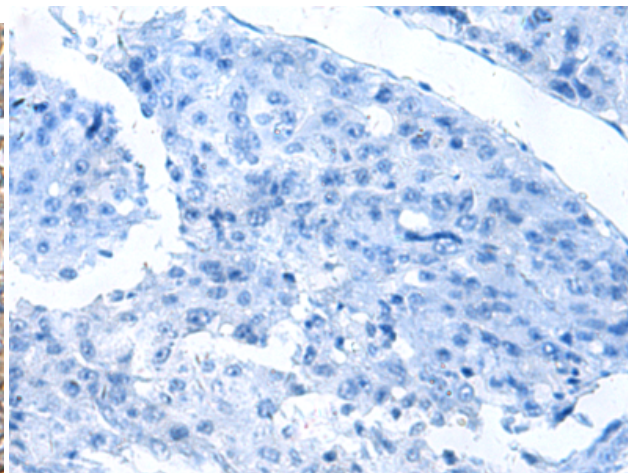
Constituents: PBS (without Mg²⁺ and Ca²⁺), pH 7.4, 150 mM NaCl, 0.05% Sodium Azide and 40% glycerol

Research Areas: Signal Transduction

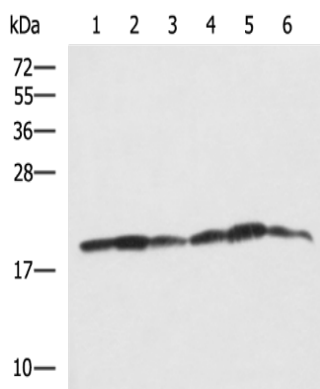
Storage & Shipping: Store at -20°C. Avoid repeated freezing and thawing



Immunohistochemistry analysis of paraffin embedded Human liver cancer tissue using 219223(BLOC1S6 Antibody) at a dilution of 1/95(Cytoplasm).



In comparison with the IHC on the left, the same paraffin-embedded Human liver cancer tissue is first treated with the fusion protein and then with 219223(Anti-BLOC1S6 Antibody) at dilution 1/95.



Gel: 12%SDS-PAGE, Lysate: 40 µg;
 Lane 1-6: 231, HeLa, Jurkat, 293T, K562 and HepG2 cell lysates;
 Primary antibody: 219223(BLOC1S6 Antibody) at dilution 1/650;
 Secondary antibody: HRP-conjugated Goat anti rabbit IgG at 1/5000 dilution;
 Exposure time: 5 seconds